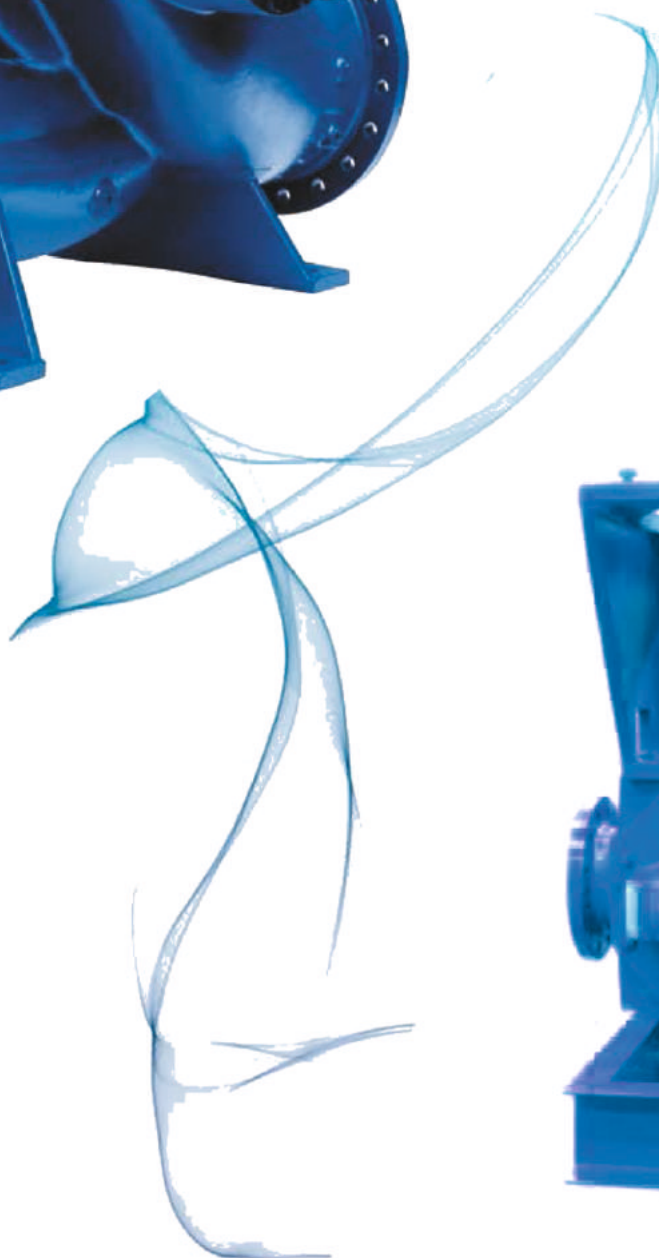


Made In Italy

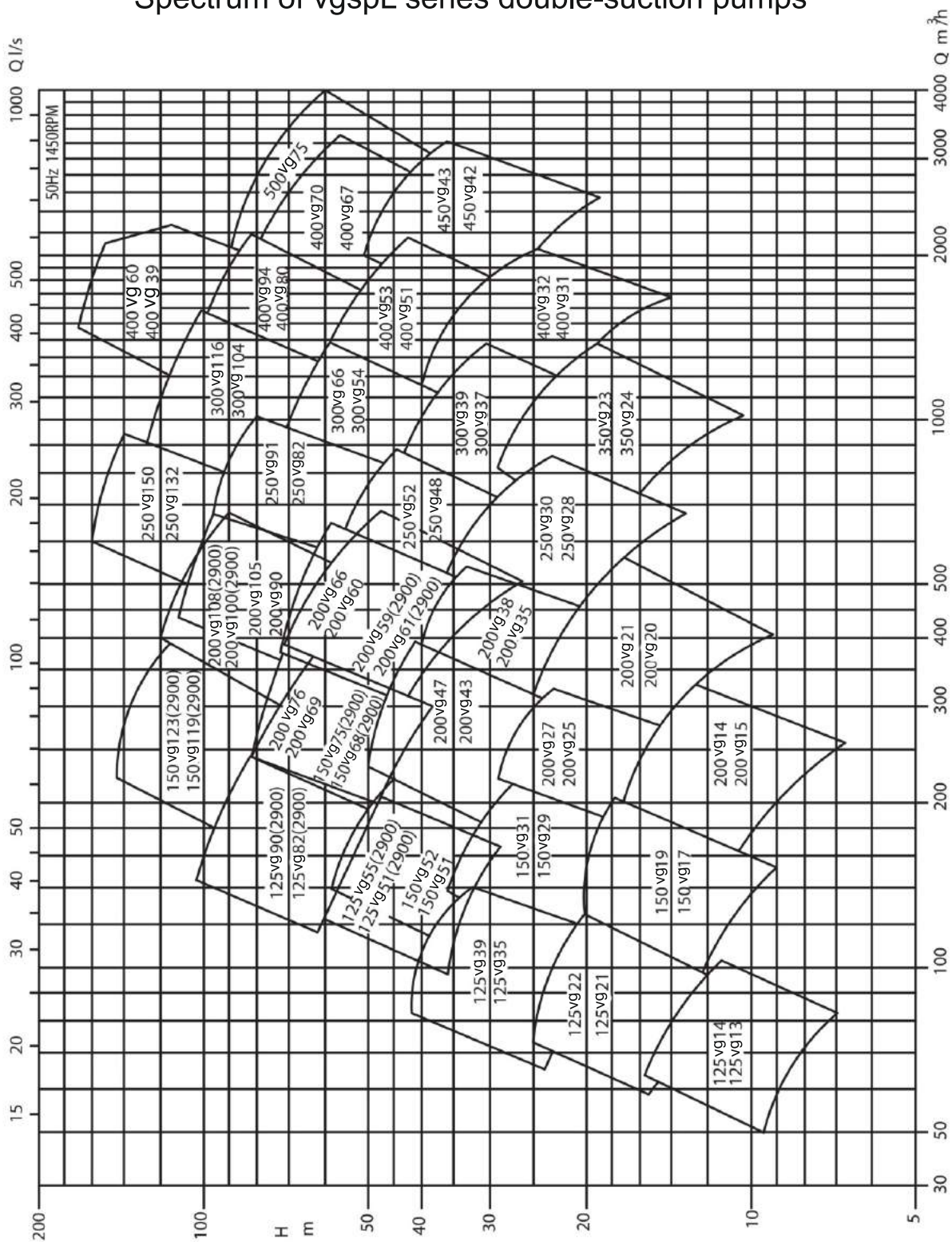


VGSP

SERIES
Technical Catalogue

2021

Spectrum of vgspl series double-suction pumps



The performance data is applicable to the medium whose density is 1kg/dm³ and viscosity is less than 20mm²/s.

Main application:

double suction centrifugal pumps, which have many features, such as long service life, high efficiency, rational construction, low operation cost, ease of installation and repair and so on. They are mainly used for municipal water supply, central heating, air-conditioning, fire fighting system, water treatment, drainage pump station, power plant, shipping Industry, petro-chemical industry and so on.

vgspL series pumps have 69 model in all, after the cut for the impeller, they can achieve 276 performances.

The range of suction& discharge diameter is 125~500mm. Performance range:

Capacity: 50m³/h~4000m³/h;

Head H: 10m~200m;

Max. working pressure: 25bar;

Temperature of pumping media: 130°C.

Pump model symbol:

150VGSPL31A

150-pump suction diameter (mm);

VGSPL-horizontal double suction centrifugal pumps;

31-duty point head (m);

A-impeller trimmed the 1st time;

150VGSPL31A

150-pump suction diameter (mm);

VGSPL-vertical double suction centrifugal pumps;

31-duty point head (m);

A-impeller trimmed the 1st time;

Construction design:

vgspL series pumps are single stage, double suction, axial split case and volute centrifugal pumps.

Horizontal or vertical installation is both oK. The motor of the horizontal pumps can be installed in the left or in the right. The flange can be made in conformity with GB, ISO, DIN, BS and ANSI standard.

The suction & discharge inlet are horizontally below the shaft centerline.

When the maintenance or service is needed, just open the pump cover and take out the rotator to repair, without dismantling the pipeline and motor.

Shaft Seal:

Packing seal or mechanical seal (non-balance type) is adopted. The mechanical is not limited by the rotation direction.

Bearing & Balance installation:

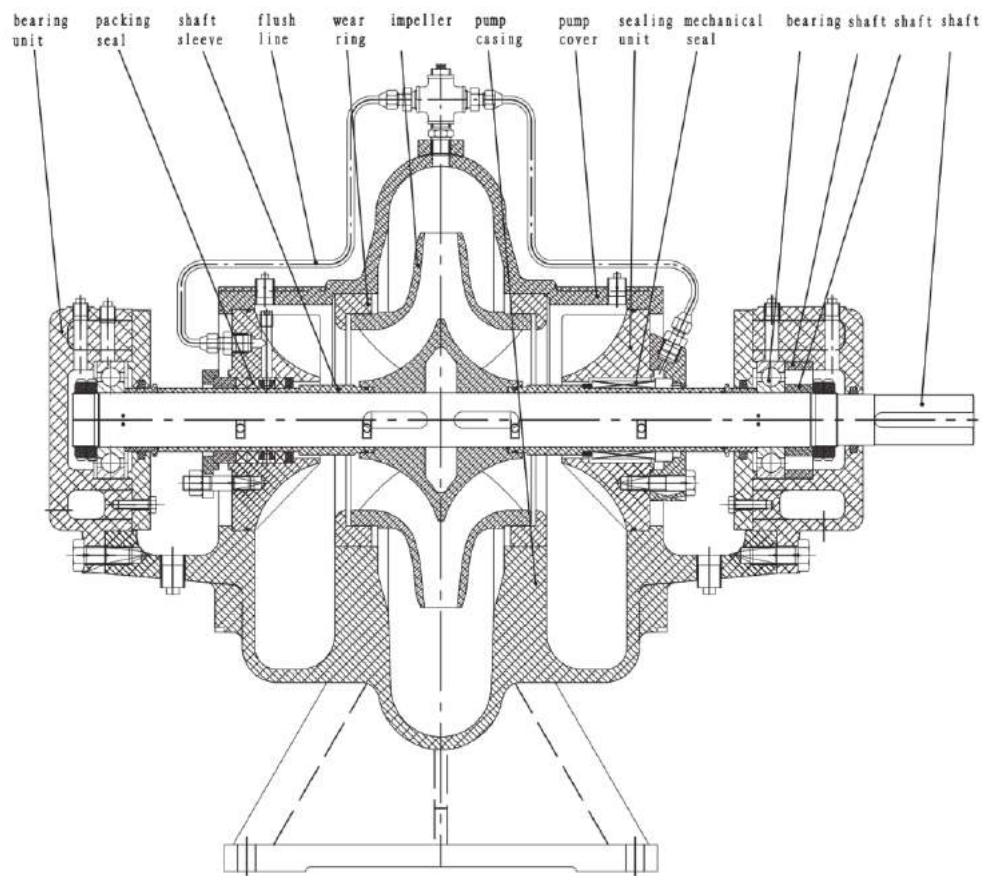
Horizontal type: 1 deep groove ball bearings in the driven end; 1 ball bearing in the non-driven end. Vertical type: 2 angular contact bearings in the driven end, and grease is used for lubricating; 1 sliding bearing of composite material in the lower part, and medium is used for lubricating. The axial force is balanced by double suction impeller, and the remnant axial force is undertaken by the double-row bearing.

Data for order:

- pump model
- capacity Q
- head H
- suction & discharge flange pressure class (GB standard, if other standards is needed, please note)
- material of the main parts (general material is grey cast iron HT250, the material for shaft is 45 steel, if other material is needed, please note)
- pumping medium and its temperature
- shaft seal type: packing seal or mechanical seal (in general, packing seal is used, unless note is offered for mechanical seal)
- pump installation type (in general, it is clockwise)
- motor data: voltage, power, protection class, insulation class etc.

Note: The order is not limited by the performance curve of the sample and the parameter listed in the technical data table, all the parameters are special only for reference, our company can supply the product according to the users' design.

Construction features of vgspl split case pump



Pump casing :

The design pressure of pump casing is 1.6 Mpa & 2.5 Mpa. To satisfy different standard, suction and discharge flange can be in conformity with GB, ANSI, PN, and JIS standard. The suction and discharge flanges are all set in the casing, so it is easy to maintain the pump: just open the pump cover and take out the rotator to repair, without dismantling the pipeline system. Some pumps of high head adopt double volute design to reduce the radial force and then extend the service life of mechanical seal and bearing.

Pump cover :

Thicker flange is fastened with casing by long bolts with advantage of no leakage. The pump cover can be self-modified for ease of installation and repair.

Impeller :

The impeller is high efficiency designed with good waterpower design software; the suction area of impeller is big, no vortex in the suction, stable operation, low energy cost, low noise, less vibration and long service life.

Shaft:

The pump shaft is totally sealed, no contact with medium, no erosion, long service life, thicker shaft axis, shorter distance between bearings, no vibration, all the above can increase the rigidity of the shaft and extend the service life of the mechanical seal and bearing. The rotation parts don't need to be adjusted; it should be assembled with disk spring prestress, and it is easy to dismantle and assemble for the rotation part.

Shaft sleeve:

Different materials are available for the shaft sleeves to avoid corrosion or worn out. It is replaceable design.

Wear ring:

The replaceable wear ring between the pump casing and impeller is used to avoid them worn-out. It is convenient to replace, and the repairing cost is low, at the same time ensuring running clearance and higher working efficiency.

Bearing unit:

There is a cooling chamber in the bearing unit to ensure Max. pumping temperature 130 °C. The driving end of horizontal pump adopts double-row deep groove ball bearing, the driving end of the vertical pump adopts double-row angular contact bearing to bear remnant axial force. The bearings are lubricated by grease. The seal-type bearing is an alternative option. The service life of bearings is over 100,000 hours. There is greasing socket and temperature-detecting socket which is convenient for oiling and the temperature control.

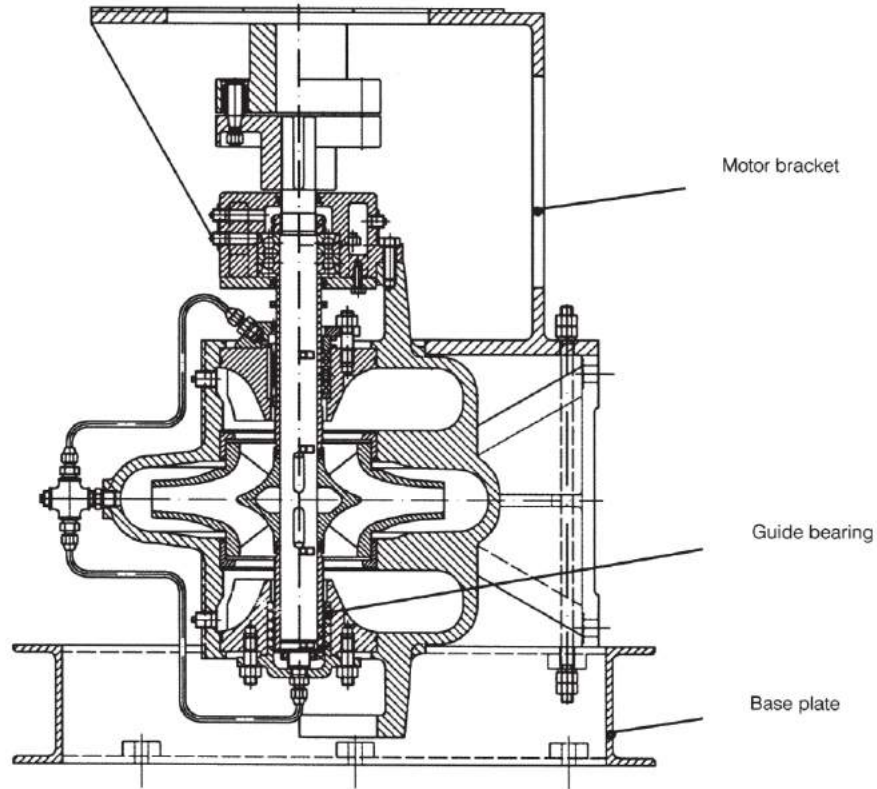
Packing seal:

Specially-designed open type packing cover ring makes it enough space for easy maintenance.

Installation type:

There are 2 kinds of installation: horizontal and vertical installation. Vertical installation can save much installation space.

Construction Features of Vgspl Split Case Pump



GB	DIN	GB	DIN
HT250	GG-25	45	C45N
QT400-18	GGG-40	3Cr13	1.4028
ZG230-450	GS-C25		
HT250	GG-25	HT250	GG-25
ZCuSn10Zn2	G-CuSn10Zn	ZCuSn5P65Zn5	ZCuSn5Zn5P6
ZCuZn16Si4	G-CuZn15Si4	ZG1Cr18Ni12Mo2Ti	1.4581
ZG1Cr18Ni12Mo2Ti	1.4581		

MATERIAL

Pump casing
 Cast iron
 Ductile iron
 Cast steel

GB	DIN
HT250	GG-25
QT400-18	GGG-40
ZG230-450	GS-C25

Shaft
 Carbon steel
 Stainless steel

GB	DIN
45	C45N
3Cr13	1.4028

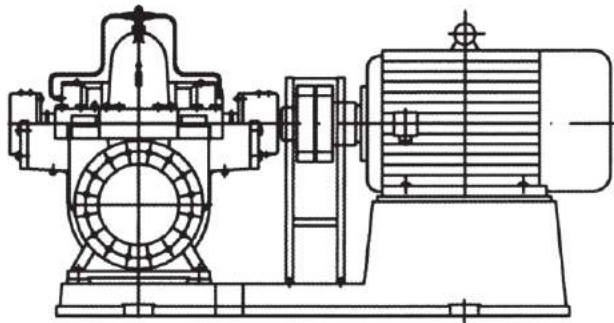
Impeller
 Cast iron
 Bronze
 Brass
 Stainless steel

GB	DIN
HT250	GG-25
ZCuSn10Zn2	G-CuSn10Zn
ZCuZn16Si4	G-CuZn15Si4
ZG1Cr18Ni12Mo2Ti	1.4581

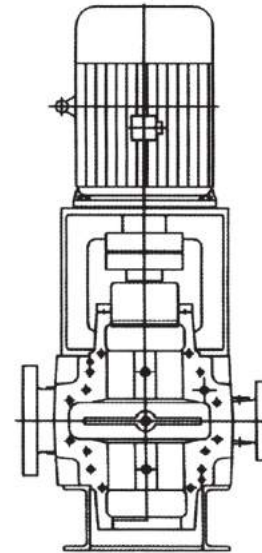
Wear ring
 Cast iron
 Tin Bronze
 Stainless steel

GB	DIN
HT250	GG-25
ZCuSn5P65Zn5	ZCuSn5Zn5P6
ZG1Cr18Ni12Mo2Ti	1.4581

Installation type



Horizontal



Vertical

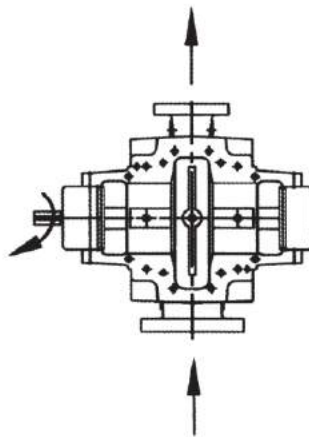
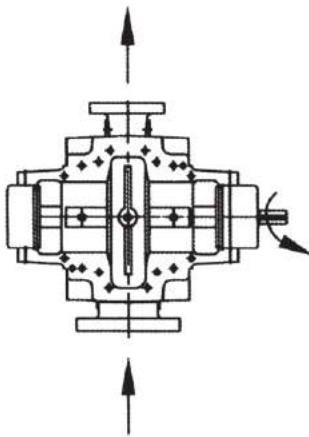
Rotation direction/Flow direction

Counter clockwise
Viewed from the
driving side

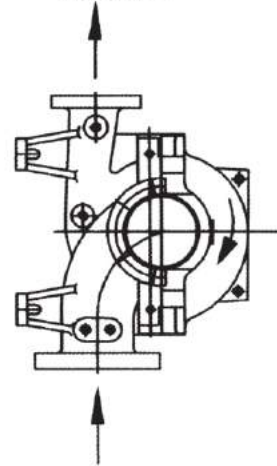
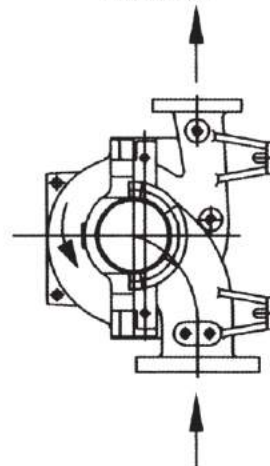
Clockwise
Viewed from the
driving side

Counter clockwise
Viewed from the
driving side

Clockwise
Viewed from the
driving side



Horizontal(Vertical view)



Vertical(Vertical view)

Table of Performance									
pump type		Capacity		head m	speed r/min	Power(kw)		Efficiency %	(NPSH) r m
		m ³ /h	L/S			Shaft power	Motor power		
125VGSP55 125VGSPL55	O	98.4	27.3	64	2950	26.4	37	65	5
		164	45.6	55		33.2		74	5.5
		192	53.3	49		35.8		71.5	7.5
	A	90.6	25.2	55.5	2950	20.4	30	67	4.8
		151	41.9	47.5		26.4		74	5.5
		181.2	50.3	41		28.6		70.6	7.5
	B	86.4	24.0	47	2950	17.0	30	65	4.5
		144	40.0	39		21.2		72	5.3
		172.8	48.0	34		23.2		69	7.2
	C	82.2	22.8	39	2940	13.4	22	65	4.4
		137	38.1	31		16.3		71	5
		156	43.3	28		18.3		65	7
125VGSP1 125VGSPL1	O	80.4	22.3	59.5	2950	19.7	30	66	4.5
		134	37.2	51		25.5		73	5
		160.8	44.7	45		27.4		72	7.5
	A	79.8	22.2	52	2950	16.9	30	67	4.4
		133	36.9	43.5		21.8		72.2	5
		159.6	44.3	37		23.2		69.2	7.4
	B	74.4	20.7	42.5	2930	13.0	18.5	66	4.2
		124	34.4	36		16.9		72	5
		148	41.1	30		17.3		70	7.2
	C	67.8	18.8	37	2930	10.5	15	65	4
		113	31.4	31		13.2		72	5
		135.6	37.7	27		14.2		70	7
125VGSP90 125VGSPL90	O	124	34.4	102	2970	53.8	75	64	6
		207	57.5	94.5		69.6		76.5	7.3
		225	62.5	90		73.0		75.5	10
	A	116.4	32.3	87.5	2970	40.2	75	69	6
		194	53.9	77		52.5		77.5	7.3
		215	59.7	74		57.7		75	10
	B	110.4	30.7	73	2970	31.8	55	69	6
		184	51.1	63.5		41.9		76	7
		210	58.3	61		47.8		73	9.5
	C	103.8	28.8	62	2950	26.1	37	67	6
		173	48.1	50		31.4		75	7
		195	54.2	50		36.9		72	9.5
125VGSP82 125VGSPL82	O	102.6	28.5	88	2970	37.8	75	65	5.8
		171	47.5	82		51.6		74	7.2
		205.2	57.0	63		50.3		70	9.5
	A	96	26.7	78	2970	32.9	45	62	5.6
		155	43.1	72		42.2		72	7
		178	49.4	68		47.8		69	9.2
	B	87	24.2	67	2950	24.4	37	65	5.5
		144	40.0	60		32.4		72.5	6.9
		175	48.6	56		35.6		75	9.1
	C	82.2	22.8	55	2950	18.6	30	66	5.4
		137	38.1	49		25.4		72	6.7
		164.4	45.7	44.5		27.7		72	8.9
150VGSP75 150VGSPL75	O	174	48.3	95	2970	66.2	90	68	6
		290	80.6	74		77.9		75	8
		348	96.7	65		85.5		72	9.7
	A	168	46.7	75	2970	51.2	75	67	6
		280	77.8	68		70.5		73.5	7.8
		336	93.3	54.8		69.6		72	9.5
	B	151.2	42.0	64	2970	36.6	55	72	6
		252	70.0	54		48.7		76	7.5
		302	83.9	46		51.8		73	9.3
	C	145.2	40.3	57.5	2970	31.6	45	72	6
		242	67.2	44		38.6		75	7.5
		290.4	80.7	37.6		42.5		70	9.3

Table of Performance									
pump type		Capacity		head m	speed r/min	Power(kw)		Efficiency %	(NPSH) r m
		m ³ /h	L/S			Shaft power	Motor power		
150VGSP68 150VGSPL68	O	148	41.1	77	2970	47.0	75	66	6
		248	68.9	71		63.1		76	7.3
		297	82.5	65		71.0		74	9.5
	A	136.8	38.0	66.5	2970	37.0	55	67	6
		228	63.3	58		48.0		75	7.2
		273	75.8	51		54.1		70	9.4
	B	129.6	36.0	57	2970	30.5	45	66	6
		216	60.0	50		39.2		75	7.1
		260	72.2	44		42.7		73	9.2
	C	114	31.7	49.5	2950	24.0	37	64	6
		190	52.8	42.5		30.1		73	7
		228	63.3	38.5		33.4		71.5	9.2
150VGSP123 150VGSPL123	O	220.2	61.2	131	2980	112.2	200	70	6
		360	100.0	123		160.7		75	9
		440.4	122.3	105		179.8		70	11
	A	201	55.8	124	2980	96.9	160	70	6
		335	93.1	106		130.6		74	9
		402	111.7	92		141.8		71	11
	B	181.2	50.3	107	2980	77.6	132	68	5.8
		302	83.9	90		102.8		72	8.5
		360	100.0	78		109.2		70	11
	C	166.2	46.2	88	2970	60.3	90	66	5.5
		277	76.9	74		79.7		70	6
		332.4	92.3	64		85.2		68	11
150VGSP119 150VGSPL119	O	169.8	47.2	138	2980	93.8	160	68	6
		283	78.6	119		123.9		74	6.3
		330	91.7	104		135.4		69	11
	A	155.4	43.2	118	2980	74.5	132	67	5.5
		259	71.9	103		100.9		72	6.2
		305	84.7	91		114.5		66	10.5
	B	150	41.7	99	2980	61.3	110	66	5.5
		250	69.4	84		81.7		70	6.1
		300	83.3	74		93.0		65	10
	C	140.4	39.0	82	2970	48.2	75	65	5
		234	65.0	69		64.6		68	6
		280.8	78.0	58		70.4		63	9.5
200VGSP59 200VGSPL59	O	319.8	88.8	77	2980	89.4	132	75	6.5
		533	148.1	60		111.6		78	7
		639.6	177.7	48		116.9		71.5	8.5
	A	294	81.7	67	2980	73.0	110	73.5	6.4
		490	136.1	52		89.5		77.5	6.8
		588	163.3	43		95.6		72	8
	B	272.4	75.7	60	2970	65.4	75	68	6.4
		450	125.0	43		68.1		77.3	6.7
		538	149.4	34		74.3		67	7.6
	C	255	70.8	55.5	2970	55.8	75	69	6.5
		425	118.1	40		62.5		74	6.6
		510	141.7	33		66.4		69	7.5
200VGSP61 200VGSPL61	O	296	82.2	78	2980	89.8	110	70	6.5
		472	131.1	60.5		100.3		77.5	6.9
		556	154.4	51		108.7		71	8
	A	261.6	72.7	66	2980	63.9	90	73.5	6.4
		436	121.1	52		79.5		77.6	6.7
		523	145.3	44		88.9		70.5	7.5
	B	250	69.4	60	2970	56.7	75	72	6.4
		410	113.9	46		67.1		76.5	6.7
		490	136.1	39		72.3		72	7.6
	C	230	63.9	56	2970	50.8	75	69	6.5
		382	106.1	43		60.4		74	6.6
		460	127.8	34		61.7		69	7.5

Table of Performance									
pump type		Capacity		head m	speed r/min	Power(kw)		Efficiency %	(NPSH) r m
		m ³ /h	L/S			Shaft power	Motor power		
150VGSP108 150VGSPL108	O	324	90.0	128	2980	163.6	220	69	8
		540	150.0	108		193.6		82	9.2
		620	172.2	102		217.9		79	10.5
	A	300	83.3	111	2980	129.4	185	65	8
		490	136.1	88		148.6		79	9.1
		588	163.3	77		164.3		75	10.5
	B	270	75.0	95	2980	116.4	132	60	8
		450	125.0	75		119.3		77	9.1
		540	150.0	63		125.1		74	10.5
	C	270	75.0	74	2980	84.3	110	64.5	8
		400	111.1	61		89.2		74.5	9.1
		480	133.3	53		96.2		72	10.5
200VGSP100 200VGSPL100	O	330	91.7	120	2980	143.7	185	75	8
		480	133.3	100		166.5		78.5	9.5
		576	160.0	86		177.4		76	11
	A	315	87.5	100	2980	111.4	160	77	8
		440	122.2	88		133.1		79.2	9.5
		540	150.0	73		143.1		75	11
	B	300	83.3	83	2980	88.6	110	76.5	8
		420	116.7	70		101.3		79	9.2
		485	134.7	59		102.5		76	10.5
	C	240	66.7	72	2970	65.3	90	72	8
		350	97.2	62		75.7		78	9
		420	116.7	53		79.7		76	10
125VGSP14 125VGSPL14	O	49.8	13.8	16	1440	3.5	5.5	62	2
		83	23.1	13.8		4.4		71	3.2
		99.6	27.7	12.2		4.9		68	3.8
	A	45.6	12.7	13.8	1440	2.8	4	61	2
		76	21.1	11.8		3.5		70	3.2
		91.2	25.3	10.4		3.9		67	3.8
	B	43.2	12.0	11.7	1430	2.3	3	60	2
		72	20.0	9.8		2.8		68	3
		86.4	24.0	8.6		3.1		66	3.5
	C	41.4	11.5	9.9	1430	2.0	3	57	2
		69	19.2	8.2		2.3		66	3
		82.8	23.0	6.8		2.5		62	3.5
125VGSP13 125VGSPL13	O	40	11.1	13.5	1440	2.5	4	60	2
		65	18.1	12.8		3.2		71	3
		78	21.7	11.5		3.5		70.5	3.5
	A	40	11.1	12	1430	2.1	3	61	2
		65	18.1	10.5		2.7		69.2	3
		71.2	19.8	10		2.8		69	3.5
	B	40	11.1	9.7	1430	1.7	3	61	2
		61	16.9	8.8		2.1		68	3
		74	20.6	7.6		2.3		66.4	3.5
	C	38.8	10.8	8	1430	1.5	2.2	58	2
		59	16.4	7.3		1.8		65	3
		69.6	19.3	6.4		1.9		63	3.5
125VGSP22 125VGSPL22	O	63	17.5	24	1460	6.2	11	66.5	2
		105	29.2	22		8.1		77.5	3
		124	34.4	20		8.9		76	3.5
	A	59.4	16.5	22	1460	5.4	11	65.5	2
		100	27.8	19		6.9		74.5	2.7
		120	33.3	17		7.6		73	3.5
	B	54	15.0	17.5	1440	4.1	7.5	63	2
		90	25.0	15.5		5.1		75	2.3
		108	30.0	14.5		5.8		73	3.4
	C	50.4	14.0	14.5	1440	3.2	5.5	63	2
		78	21.7	13		3.8		72.5	2.3
		100.8	28.0	11		4.3		71	3.2

Table of Performance									
pump type		Capacity		head m	speed r/min	Power(kw)		Efficiency %	(NPSH) _r m
		m ³ /h	L/S			Shaft power	Motor power		
125VGSP21 125VGSPL21	O	46	12.8	22	1450	4.4	11	63	2.5
		85	23.6	20.7		6.1		78	3.1
		130	36.1	17		7.9		76	4.1
	A	47	13.1	19.5	1450	4.1	7.5	61	2.5
		77	21.4	17.5		4.7		78	2.9
		110	30.6	15		5.8		77	4.1
	B	43.2	12.0	15.9	1450	3.0	5.5	63	2.5
		72	20.0	15		3.9		75	2.9
		95.5	26.5	13		4.6		73	3.8
	C	40	11.1	14	1450	2.4	4	63.5	2.5
		67	18.6	11		2.7		75	2.8
		80	22.2	10		3.0		73	3.5
125VGSP39 125VGSPL39	O	67.8	18.8	42.5	1470	12.5	22	63	3
		116	32.2	38.8		18.0		68	3.8
		135.6	37.7	33.5		19.9		62	4.5
	A	59.4	16.5	36.5	1460	9.2	15	64	3
		99	27.5	33		13.2		67.5	3.6
		95	26.4	30		11.9		65	4.4
	B	64	17.8	29	1460	8.6	15	59	3
		88	24.4	27.5		10.6		62.3	3.5
		105.6	29.3	24		11.7		59	4.2
	C	49	13.6	26	1460	5.8	11	60	3
		81	22.5	22.5		8.1		61	3.1
		98	27.2	18		8.3		58	4
125VGSP35 125VGSPL35	O	59.4	16.5	41	1470	9.9	18.5	67	4.5
		99	27.5	35.5		13.1		73	5.6
		118.8	33.0	31		14.1		71	6.5
	A	54	15.0	35.5	1460	8.0	15	65	4.2
		90	25.0	30.8		10.8		70	4.9
		108	30.0	26.5		11.5		68	6.2
	B	45.6	12.7	29	1460	5.8	11	62	4
		76	21.1	25.5		8.0		66	4.6
		91.2	25.3	22.5		8.6		65	6
	C	40.2	11.2	23	1460	4.2	7.5	60	3.8
		67	18.6	20		5.7		64	4.4
		80.4	22.3	17.5		6.2		62	5.8
150VGSP19 150VGSPL19	O	100	27.8	22	1460	10.0	15	60	6
		149	41.4	18.7		10.8		70	6.8
		170	47.2	16.5		11.1		69	7.5
	A	84	23.3	18	1460	6.5	11	63	6
		140	38.9	15.5		8.4		70	6.8
		165	45.8	13.5		9.2		66	7.5
	B	75.6	21.0	16	1440	5.1	7.5	64	6
		126	35.0	13.5		6.6		70	6.2
		145	40.3	12		7.0		68	7.2
	C	76	21.1	13	1440	4.3	7.5	62	6
		121	33.6	11		5.5		66	6.2
		140	38.9	9.5		5.7		64	7.2
150VGSP17 150VGSPL17	O	79	21.9	18.5	1460	6.0	11	66	3
		124	34.4	17		7.9		72.2	3.3
		148.8	41.3	14.6		8.4		70.6	4
	A	68.4	19.0	17.5	1440	5.0	7.5	65	3
		114	31.7	14.5		6.3		71.5	3.3
		136.8	38.0	12.5		6.8		68	4
	B	64.8	18.0	15	1440	4.1	7.5	65	3
		108	30.0	12.5		5.2		71	3.2
		129.6	36.0	10.7		5.6		68	4
	C	57	15.8	13	1440	3.2	5.5	64	3
		95	26.4	11		4.1		70	3.2
		114	31.7	9.3		4.4		66	4

Table of Performance									
pump type		Capacity		head m	speed r/min	Power(kw)		Efficiency %	(NPSH) _r m
		m ³ /h	L/S			Shaft power	Motor power		
150VGSP31 150VGSPL31	O	105	29.2	35	1470	14.8	30	67.5	3
		185	51.4	31		19.5		80	3.8
		240	66.7	28		24.1		76	4.5
	A	99.6	27.7	30.5	1470	12.5	18.5	66	3
		166	46.1	27		15.3		79.5	3.8
		190	52.8	25.6		16.8		79	4.5
	B	91	25.3	26	1450	9.6	15	67	3
		152	42.2	22.5		11.8		79	3.6
		186	51.7	20.5		13.5		77	4.3
	C	85	23.6	21	1450	7.4	11	66	3
		141	39.2	18.5		9.2		77.5	3.6
		169	46.9	16		9.7		76	4.3
150VGSP29 150VGSPL29	O	103	28.6	30.8	1470	12.2	18.5	71	3
		141	39.2	29		14.2		78.5	3.8
		170	47.2	27		15.7		79.5	4.5
	A	86	23.9	27.5	1460	9.8	15	66	3
		134	37.2	25.5		12.0		77.5	3.8
		160.8	44.7	24.5		13.7		78	4.5
	B	78	21.7	23	1460	7.3	11	67	3
		125	34.7	21		9.4		76	3.6
		140	38.9	20.5		10.3		75.5	4.3
	C	77	21.4	18.5	1460	5.9	11	66	3
		118	32.8	17		7.1		77	3.6
		145	40.3	15		7.8		76	4.3
150VGSP52 150VGSPL52	O	111	30.8	55.5	1480	25.8	45	65	3.8
		178	49.4	52		35.0		72	4.1
		222	61.7	45		41.2		66	5
	A	100	27.8	49	1480	20.2	37	66	3.8
		167	46.4	43		27.5		71	3.8
		200.4	55.7	37.5		32.0		64	5
	B	93	25.8	44	1470	17.4	30	64	3.6
		156	43.3	37.5		23.4		68	3.6
		186	51.7	32		25.7		63	4.8
	C	82	22.8	34	1470	12.0	22	63	3.6
		135	37.5	30.3		16.9		66	3.4
		162	45.0	25		18.4		60	4.8
150VGSP51 150VGSPL51	O	100	27.8	55.6	1480	24.4	45	62	4
		162	45.0	52		32.3		71	4.6
		200	55.6	45		36.6		67	5.5
	A	88	24.4	48.5	1470	18.7	30	62	4
		144	40.0	43.5		24.7		69	4.5
		170.4	47.3	39		27.2		66.5	5.5
	B	79	21.9	41	1470	13.8	30	64	3.9
		131	36.4	36.6		19.2		68	4.3
		157.2	43.7	32.7		21.5		65	5.3
	C	70	19.4	32.5	1470	10.0	18.5	62	3.6
		115	31.9	29		14.0		65	4
		138	38.3	26		15.5		63	5.2
200VGSP14 200VGSPL14	O	164.4	45.7	18	1470	11.3	18.5	71	2
		274	76.1	14.8		14.7		75	2.3
		328.8	91.3	12.5		15.8		71	3
	A	144.6	40.2	15.6	1460	9.4	15	65	2
		241	66.9	12.5		11.2		73	2.2
		289.2	80.3	10.8		12.5		68	3
	B	138	38.3	13.5	1460	8.2	11	62	2
		230	63.9	10.6		9.3		71	2.2
		276	76.7	8.7		9.9		66	3
	C	125.4	34.8	11.6	1460	6.8	11	58	1.8
		209	58.1	8.7		7.3		68	2
		250.8	69.7	7.3		8		62	2.8

Table of Performance									
pump type	Capacity		head m	speed r/min	Power(kw)		Efficiency %	(NPSH)r m	
	m ³ /h	L/S			Shaft power	Motor power			
200VGSP15 200VGSPL15	O	165	39.7	16.8	1460	11.2	15	64	2
		220	55.6	15		12.2		73.5	2.2
		280	77.8	13		13.8		72	3
	A	127.5	35.3	16.8	1460	8.3	15	70	1.8
		212	58.9	13		10.4		72	2
		265	66.7	11.2		11.2		72	2.8
	B	123	34.2	14.2	1460	6.9	11	69	1.8
		205	56.9	11.5		9.0		71	2
		246	68.3	10		9.8		68	2.6
	C	117	32.5	11.8	1460	5.6	11	67	1.8
		195	54.2	9.1		6.9		70	2
		220	65.0	8.1		8		61	2.6
200VGSP27 200VGSPL27	O	150	41.7	30	1470	17.4	30	70.5	3
		269	74.7	26		23.8		80	3.4
		322.8	89.7	22.5		26.4		75	4
	A	145.8	40.5	24.5	1470	14.1	22	69	3
		243	67.5	22		18.3		79.5	3.4
		291.6	81.0	19		19.8		76	4
	B	144	40.0	21.5	1470	12.4	18.5	68	2.8
		223	61.9	18		14.2		77	3.2
		280	77.8	14.5		15.4		72	3.8
	C	121.2	33.7	18	1450	9.0	15	66	2.8
		202	56.1	15		10.9		76	3
		242.4	67.3	12.5		11.5		72	3.8
200VGSP25 200VGSPL25	O	144.6	40.2	28.5	1470	15.8	30	71	7
		241	66.9	25		20.8		79	8
		293	81.4	19		21.6		70	9.5
	A	130.8	36.3	25	1470	12.5	18.5	71	7
		218	60.6	20		15.3		77.5	8
		260	72.2	17.5		17.4		71	9.5
	B	120	33.3	20	1450	9.9	15	66	6.5
		196	54.4	17		12.1		75	7.5
		240	66.7	13.4		12.5		70	9
	C	103.8	28.8	17	1450	7.6	11	63	6.5
		173	48.1	13.7		8.7		74	7.5
		207.6	57.7	11.5		9.4		69	9
200VGSP47 200VGSPL47	O	186	51.7	54	1480	36.5	75	75	2.5
		320	88.9	48		50.4		83	2.9
		400	111.1	44		60.6		79	4
	A	170	47.2	45.5	1480	28.3	55	74.5	2.4
		281	78.1	41.5		38.7		82	2.7
		355	98.6	35		43.4		78	3.8
	B	153	42.5	37	1480	20.5	37	75	2.2
		265	73.6	33		29.0		82	2.4
		310	86.1	27.5		30.5		76	3.6
	C	140	38.9	30	1470	15.5	30	74	2.2
		240	66.7	26		21.4		79.5	2.4
		290	80.6	22.5		23.7		75	3.5
200VGSP43 200VGSPL43	O	166.2	46.2	48	1480	30.0	55	72.5	2.2
		277	76.9	43		41.0		79	2.6
		332.4	92.3	38.5		45.0		77.5	4
	A	151.2	42.0	42	1480	24.3	45	71	2.2
		252	70.0	37		32.5		78	2.5
		302.4	84.0	33		35.3		77	3.8
	B	136.2	37.8	34.5	1470	18.3	30	70	2.2
		227	63.1	30.5		24.5		77	2.5
		272.4	75.7	27		26.7		75	3.8
	C	118.8	33.0	27.5	1470	13.1	22	68	2.2
		198	55.0	24.5		17.4		76	2.4
		237.6	66.0	22		19.2		74	3.5

Table of Performance									
pump type		Capacity		head m	speed r/min	Power(kw)		Efficiency %	(NPSH) _r m
		m ³ /h	L/S			Shaft power	Motor power		
200VGSP76 200VGSPL76	O	204	56.7	83	1480	65.8	110	70	2.5
		328	91.1	76		88.1		77	3.3
		364	101.1	71		93.8		75	4
	A	175.2	48.7	78	1480	59.0	90	63	2.5
		290	80.6	67		69.6		76	2.7
		340	94.4	56		70.0		74	3.8
	B	153.6	42.7	66	1480	44.5	75	62	2.2
		250	69.4	56.5		52.0		74	2.4
		297	82.5	46.7		53.2		71	3.6
	C	140	38.9	56.5	1480	35.3	55	61	2.2
		230	63.9	47		40.9		72	2.4
		276	76.7	37.5		40.3		70	3.6
200VGSP69 200VGSPL69	O	175.8	48.8	81.5	1480	60.9	110	64	2.5
		285	79.2	70		72.4		75	3
		350	97.2	65		86.0		72	4
	A	161	44.7	74.5	1480	50.2	75	65	2.5
		270	75.0	63.5		63.9		73	3
		310	86.1	59		71.1		70	3.8
	B	147	40.8	60	1480	36.4	55	66	2.2
		227	63.1	53		47.1		69.5	2.8
		250	69.4	49.5		52.2		64.5	3.6
	C	124	34.4	52.5	1480	28.6	45	62	2.2
		200	55.6	47		38.2		67	2.5
		242.4	67.3	40		42.6		62	3.6
200VGSP21 200VGSPL21	O	265.8	73.8	25.5	1480	27.5	37	67	3.2
		443	123.1	21		31.9		79.5	3.7
		530	147.2	17		32.7		75	4.5
	A	241.8	67.2	23	1470	23.7	30	64	3.2
		403	111.9	18		25.0		79	3.6
		484	134.4	15		26.0		76	4.4
	B	226.8	63.0	19	1470	18.3	22	64	3.2
		370	102.8	15		19.1		79	3.4
		440	122.2	11.7		18.7		75	4.2
	C	209.4	58.2	16	1470	14.3	18.5	64	3.2
		349	96.9	11.5		14.2		77	3.4
		418.8	116.3	8.5		13.5		72	4.2
200VGSP20 200VGSPL20	O	237.6	66.0	25.5	1480	25.0	37	66	3.2
		396	110.0	20.4		30.8		78	3.7
		475.2	132.0	16		32.3		69	4.5
	A	228	63.3	21	1470	19.5	30	67	3.2
		378	105.0	16.5		23.9		76	3.6
		450	125.0	12.5		25.5		60	4.4
	B	211	58.6	19	1470	17.1	22	64	3.2
		335	93.1	14.5		18.9		74	3.4
		410	113.9	11		19.8		62	4.2
	C	198.6	55.2	16	1470	13.5	18.5	64	3.2
		330	91.7	11		14.7		70	3.4
		400	111.1	8.5		15.4		60	4.2
200VGSP38 200VGSPL38	O	269	74.7	44	1480	44.4	75	72.5	4
		446	123.9	38		58.8		78.5	4.3
		530	147.2	32		62.8		73.5	5
	A	241.8	111.9	37	1480	33.8	55	72	4
		403	134.3	31		42.5		80	4.3
		483.6	61.8	27		47.4		75	5
	B	222.6	103.1	30	1480	25.6	37	71	4
		371	123.7	25		32.0		79	4.2
		445.2	55.6	21.5		34.7		75	5
	C	200	55.6	25	1470	20.0	30	68	4
		331	91.9	20		23.1		78	4.1
		397.2	110.3	16		25.1		69	4.6

Table of Performance									
pump type	Capacity		head m	speed r/min	Power(kw)		Efficiency %	(NPSH) _r m	
	m ³ /h	L/S			Shaft power	Motor power			
200VGSP35 200VGSPL35	O	244.2	67.8	41	1480	38.4	55	71	3.6
		407	113.1	35		50.4		77	4.3
		485	134.7	29		51.7		74	5
	A	220.2	61.2	36	1480	29.2	45	74	3.6
		367	101.9	29.5		38.3		77	4.3
		440	122.2	25		41.6		72	5
	B	201	55.8	30	1480	22.8	37	72	3.5
		335	93.1	25		30.0		76	4.2
		402	111.7	21		32.4		71	4.8
	C	175.2	48.7	25	1470	16.8	30	71	3.5
		292	81.1	20.5		21.7		75	3.7
		350.4	97.3	18		24.5		70	4.3
200VGSP66 200VGSPL66	O	309	85.8	76	1480	85.2	132	75	4
		515	143.1	66		115.7		80	4.8
		580	161.1	61		125.1		77	8
	A	283.2	78.7	63	1480	66.5	110	73	4
		472	131.1	55		88.3		80	4.6
		560	155.6	48.5		98.6		75	8
	B	259.2	72.0	51.5	1480	49.8	75	73	4
		432	120.0	44		65.5		79	4.6
		520	144.4	38		72.7		74	8
	C	240	66.7	43	1480	38.2	55	73.5	4
		396	110.0	35		49.6		76	4.5
		470	130.6	28		54.3		66	8
200VGSP60 200VGSPL60	O	276	76.7	69	1480	70.1	110	74	3
		439	121.9	60		93.1		77	3.4
		510	141.7	53		100.1		73.5	6
	A	242	67.2	59	1480	53.2	90	73	3
		403	111.9	50		71.7		76.5	3.3
		491	136.4	43.5		79.6		73	6
	B	225	62.5	48.5	1480	41.3	75	72	3
		375	104.2	39.5		53.8		75	3.1
		440	122.2	34		58.2		70	6
	C	200	55.6	39	1480	29.9	45	71	3
		324	90.0	33		39.3		74	3.1
		388.8	108.0	28		42.0		70.5	6
200VGSP105 200VGSPL105	O	400	111.1	111	1480	175.2	280	69	4
		580	161.1	105		224.0		74	4.3
		700	194.4	95		255.0		71	6.8
	A	336	93.3	97	1480	140.8	220	63	4
		550	152.8	90		188.5		71.5	4.2
		650	180.6	82		210.3		69	6.5
	B	310	86.1	86	1480	117.1	200	62	4
		510	141.7	78		152.5		71	4.1
		620	172.2	69		168.8		69	6.4
	C	283.2	78.7	74	1480	89.1	132	64	3.8
		467	129.7	63		118.7		67.5	4
		550	152.8	58		133.6		65	6.2
200VGSP90 200VGSPL90	O	320	88.9	95	1480	127.3	220	65	4
		536	148.9	90		185.0		71	4.3
		640	177.8	82		207.0		69	6.8
	A	290	80.6	87	1480	105.7	200	65	4
		490	136.1	79		148.4		71	4.2
		588	163.3	73		169.3		69	6.5
	B	270	75.0	82	1480	91.3	160	66	4
		420	116.7	72		117.6		70	4.1
		540	150.0	57.5		128.1		66	6.4
	C	241.8	67.2	67	1480	67.8	110	65	3.8
		403	111.9	58		90.9		70	4
		480	133.3	54		105.3		67	6.2

Table of Performance									
pump type	Capacity		head m	speed r/min	Power(kw)		Efficiency %	(NPSH)r m	
	m ³ /h	L/S			Shaft power	Motor power			
250VGSP30 250VGSPL30	O	490	118.3	33	1480	64.7	75	68	3.6
		695	193.1	30		70.9		80	4
		770	213.9	27		74.5		76	6
	A	421	116.9	29	1480	52.8	75	63	3.6
		648	180.0	25.5		58.4		77	3.9
		750	216.1	23		62.6		75	6
	B	360	100.0	26	1480	42.5	55	60	3.7
		635	186.1	21		49.1		74	3.8
		730	212.5	18.5		51.1		72	5.6
	C	330	91.7	23	1480	37.6	45	55	3.7
		610	169.4	16		38.5		69	3.8
		710	205.6	13		38.7		65	5.5
250VGSP28 250VGSPL28	O	380	105.6	32	1480	50.9	75	65	3.6
		640	177.8	28		61.7		79	4
		760	211.1	25		69.0		75	6
	A	377	177.5	28	1480	45.6	75	63	3.6
		620	200.0	23.5		53.9		78	3.9
		720	94.4	22		59.1		73	6
	B	340	177.2	26	1480	38.8	55	62	3.7
		600	187.5	19		44.0		74	3.8
		675	86.1	17		44.0		71	5.6
	C	310	86.1	22	1480	30.4	45	61	3.7
		560	172.2	16.5		37.6		70	3.8
		703	195.3	14.5		40.2		69	5.5
250VGSP52 250VGSPL52	O	432	120.0	60	1480	94.7	160	74.5	4
		710	197.2	52		118.2		85	4.6
		852	236.7	45		139.2		75	6
	A	402	111.7	47.5	1480	70.2	110	74	4
		630	175.0	42.5		86.8		84	4.4
		750	208.3	37.5		96.3		79.5	6
	B	400	111.1	40.5	1480	60.4	90	73	4.2
		570	158.3	35.5		66.4		83	4.3
		748	207.8	29		79.8		74	5.5
	C	400	111.1	32	1480	47.1	75	74	4
		510	141.7	28.5		48.3		82	4.1
		640	177.8	24		55.0		76	5.5
250VGSP48 250VGSPL48	O	410	113.9	56	1480	80.1	132	78	4
		650	180.6	48		99.9		85	4.5
		780	216.7	41		104.9		83	6
	A	335	93.1	49	1480	58.8	90	76	4
		585	162.5	40.5		76.8		84	4.3
		700	194.4	35		82.3		81	6
	B	318	88.3	41	1480	48.0	75	74	4
		530	147.2	34.5		60.7		82	4.2
		636	176.7	28		61.4		79	5.5
	C	282	78.3	34	1480	35.3	55	74	3.8
		470	130.6	28		45.9		78	4
		564	156.7	24		47.9		77	5.5
250VGSP91 250VGSPL91	O	490	136.1	102	1480	191.6	315	71	7.5
		817	226.9	91		253.0		80	7.8
		980	272.2	83		291.3		76	9
	A	460	127.8	84	1480	142.1	250	74	7.5
		720	200.0	77		191.0		79	7.5
		910	252.8	70		225.2		77	9.5
	B	425	118.1	71	1480	112.5	185	73	7.4
		706	196.1	62.5		154.0		78	7.4
		850	236.1	54		166.6		75	9.5
	C	400	111.1	54.5	1480	82.4	132	72	7.2
		651	180.8	47.5		110.8		76	7.2
		780	216.7	40.5		117.8		73	9

Table of Performance									
pump type	Capacity		head m	speed r/min	Power(kw)		Efficiency %	(NPSH) _r m	
	m ³ /h	L/S			Shaft power	Motor power			
250VGSP30 250VGSPL30	O	490	118.3	33	1480	64.7	75	68	3.6
		695	193.1	30		70.9		80	4
		770	213.9	27		74.5		76	6
	A	421	116.9	29	1480	52.8	75	63	3.6
		648	180.0	25.5		58.4		77	3.9
		750	216.1	23		62.6		75	6
	B	360	100.0	26	1480	42.5	55	60	3.7
		635	186.1	21		49.1		74	3.8
		730	212.5	18.5		51.1		72	5.6
	C	330	91.7	23	1480	37.6	45	55	3.7
		610	169.4	16		38.5		69	3.8
		710	205.6	13		38.7		65	5.5
250VGSP28 250VGSPL28	O	380	105.6	32	1480	50.9	75	65	3.6
		640	177.8	28		61.7		79	4
		760	211.1	25		69.0		75	6
	A	377	177.5	28	1480	45.6	75	63	3.6
		620	200.0	23.5		53.9		78	3.9
		720	94.4	22		59.1		73	6
	B	340	177.2	26	1480	38.8	55	62	3.7
		600	187.5	19		44.0		74	3.8
		675	86.1	17		44.0		71	5.6
	C	310	86.1	22	1480	30.4	45	61	3.7
		560	172.2	16.5		37.6		70	3.8
		703	195.3	14.5		40.2		69	5.5
250VGSP52 250VGSPL52	O	432	120.0	60	1480	94.7	160	74.5	4
		710	197.2	52		118.2		85	4.6
		852	236.7	45		139.2		75	6
	A	402	111.7	47.5	1480	70.2	110	74	4
		630	175.0	42.5		86.8		84	4.4
		750	208.3	37.5		96.3		79.5	6
	B	400	111.1	40.5	1480	60.4	90	73	4.2
		570	158.3	35.5		66.4		83	4.3
		748	207.8	29		79.8		74	5.5
	C	400	111.1	32	1480	47.1	75	74	4
		510	141.7	28.5		48.3		82	4.1
		640	177.8	24		55.0		76	5.5
250VGSP48 250VGSPL48	O	410	113.9	56	1480	80.1	132	78	4
		650	180.6	48		99.9		85	4.5
		780	216.7	41		104.9		83	6
	A	335	93.1	49	1480	58.8	90	76	4
		585	162.5	40.5		76.8		84	4.3
		700	194.4	35		82.3		81	6
	B	318	88.3	41	1480	48.0	75	74	4
		530	147.2	34.5		60.7		82	4.2
		636	176.7	28		61.4		79	5.5
	C	282	78.3	34	1480	35.3	55	74	3.8
		470	130.6	28		45.9		78	4
		564	156.7	24		47.9		77	5.5
250VGSP91 250VGSPL91	O	490	136.1	102	1480	191.6	315	71	7.5
		817	226.9	91		253.0		80	7.8
		980	272.2	83		291.3		76	9
	A	460	127.8	84	1480	142.1	250	74	7.5
		720	200.0	77		191.0		79	7.5
		910	252.8	70		225.2		77	9.5
	B	425	118.1	71	1480	112.5	185	73	7.4
		706	196.1	62.5		154.0		78	7.4
		850	236.1	54		166.6		75	9.5
	C	400	111.1	54.5	1480	82.4	132	72	7.2
		651	180.8	47.5		110.8		76	7.2
		780	216.7	40.5		117.8		73	9

Table of Performance									
pump type		Capacity		head m	speed r/min	Power(kw)		Efficiency %	(NPSH) _r m
		m ³ /h	L/S			Shaft power	Motor power		
300VGSP66 300VGSPL66	O	704	195.6	78	1480	191.6	280	78	5
		1135	315.3	66.5		240.3		85.5	5.6
		1408	391.1	56.5		267.4		81	10
	A	671	186.4	67	1480	160.0	250	76.5	5
		1045	290.3	56		187.4		85	5.4
		1290	358.3	45.6		205.3		78	9.5
	B	630	175.0	57	1480	135.8	200	72	5
		1001	278.1	46		151.9		82.5	5.3
		1195	331.9	36.5		162.7		73	9
	C	613	170.3	47	1480	113.7	132	69	5
		942	261.7	36.7		121.4		77.5	5.1
		1084	301.1	29.8		125.6		70	8.5
300VGSP54 300VGSPL54	O	600	166.7	69	1480	146.4	250	77	4
		1080	300.0	54.5		190.8		84	4.6
		1279	355.3	39.2		202.2		67.5	8
	A	550	152.8	58	1480	118.1	200	73.5	4
		976	271.1	47		149.5		83.5	4.5
		1171	325.3	37.2		159.4		74.4	8
	B	501	139.2	50	1480	92.8	132	73.5	4
		844	234.4	41		114.2		82.5	4.5
		1063	295.3	31.5		123.2		74	8
	C	470	130.6	43	1480	76.4	110	72	4
		806	223.9	34		91.0		82	4.5
		963	267.5	26.5		95.2		73	7.5
300VGSP116 300VGSPL116	O	745	206.9	132	1480	347.7	560	77	7
		1227	340.8	116		472.5		82	7.5
		1490	413.9	103		522.2		80	9
	A	792	220.0	116.6	1480	322.3	450	78	7
		1141	316.9	102.8		389.4		82	7.5
		1356	376.7	92.6		432.7		79	9
	B	667	185.3	100	1480	242.1	355	75	7
		1084	301.1	85		307.8		81.5	7.5
		1278	355.0	76.3		338.1		78.5	8.5
	C	601	166.9	80.5	1480	178.0	250	74	7
		1001	278.1	66		224.8		80	7.2
		1186	329.4	56		237.9		76	8.5
300VGSP104 300VGSPL104	O	626	173.9	117	1480	265.8	450	75	5
		1044	290.0	104		360.4		82	7
		1253	348.1	94		416.4		77	8.5
	A	579	160.8	96	1480	201.7	355	74	5
		965	268.1	90		288.3		81	6.5
		1158	321.7	82		335.7		78	8.5
	B	525	145.8	83	1480	160.3	250	73.5	5
		875	243.1	74.5		219.1		80	6
		1050	291.7	65		238.2		77	7.5
	C	480	133.3	72	1480	128.0	200	73	5
		799	221.9	62		168.6		77	6
		959	266.4	56		189.9		74	7.5
350VGSP24 350VGSPL24	O	659	183.1	33	1480	79.0	110	74.9	5
		1098	305.0	24.5		91.5		80	5.8
		1318	366.1	20		94.4		76	7.5
	A	626	173.9	27	1480	63.0	75	73	5
		1044	290.0	19.8		72.1		78	5.8
		1253	348.1	15		69.1		74	7.2
	B	605	168.1	22.5	1480	52.9	75	70	5
		1008	280.0	15.5		56.7		75	5.7
		1210	336.1	12		58.1		68	7
	C	579	160.8	17	1480	40.6	55	66	5
		965	268.1	11.5		42.5		71	5.6
		1158	321.7	8.5		46.2		58	7

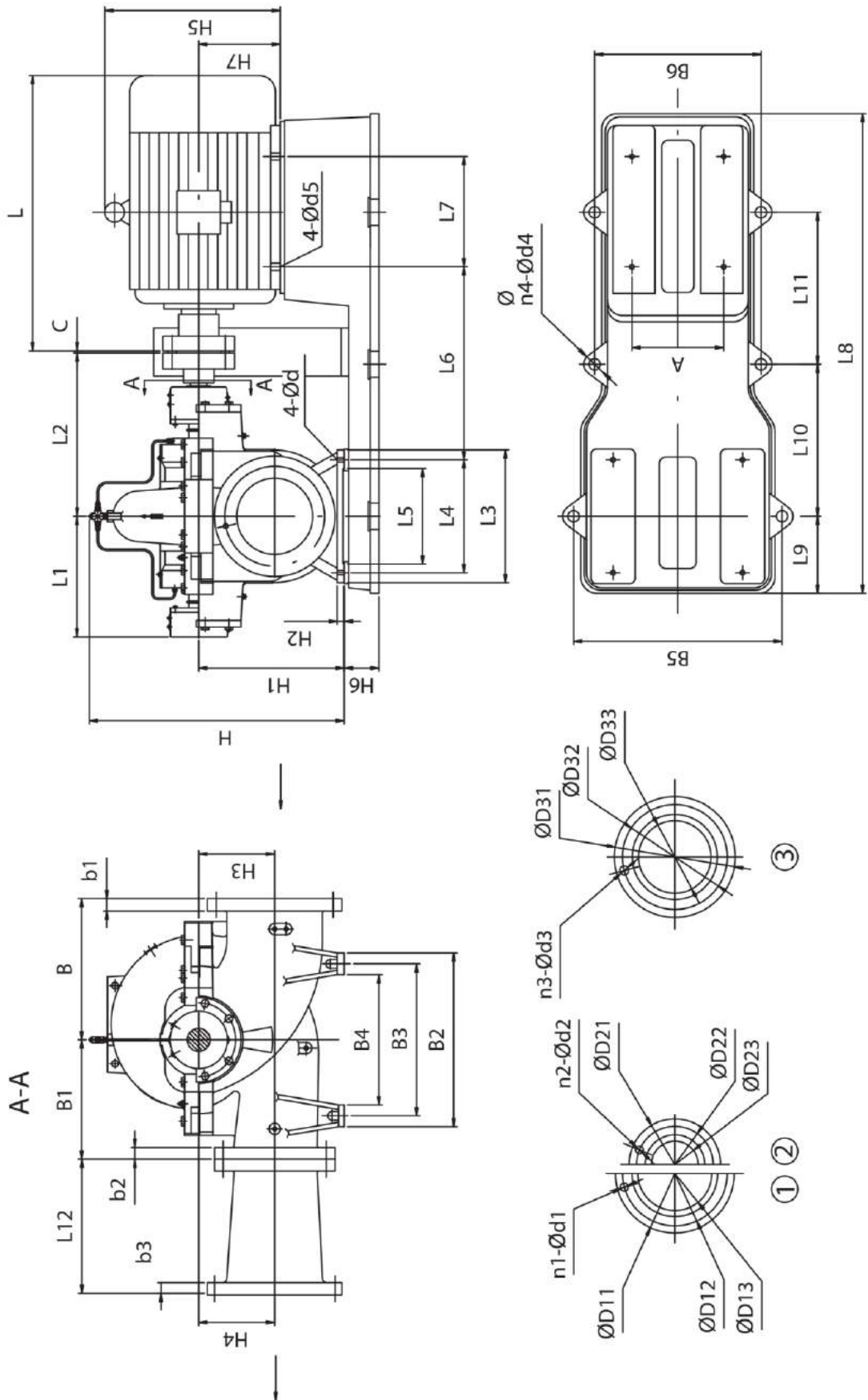
Table of Performance									
pump type	Capacity		head m	speed r/min	Power(kw)		Efficiency %	(NPSH) _r m	
	m ³ /h	L/S			Shaft power	Motor power			
350VGSP23 350VGSPL23	O	562	156.1	30	1480	63.1	90	72.7	4.5
		940	261.1	23		75.5		78	5.6
		1070	297.2	18.5		73.8		73	7.5
	A	518	250.0	26	1480	57.3	75	64	4.5
		900	288.1	19		62.1		75	5.5
		1037	133.3	17		61.5		78	7.5
	B	480	221.9	22.5	1480	50.7	55	58	4.8
		799	266.4	16.7		51.9		70	5.5
		959	116.7	14		50.8		72	7
	C	420	116.7	16	1480	40.7	45	45	6
		700	194.4	13.7		42.1		62	6
		840	233.3	12		42.2		65	6.5
400VGSP53 400VGSPL53	O	1032	286.7	63.5	1480	245.0	315	72.8	4.5
		1678	466.1	53		293.5		82.5	6.5
		1920	533.3	47.5		311.5		79.7	9.5
	A	970	269.4	54	1480	197.8	250	72.1	4.3
		1577	438.1	45		227.3		85	6.4
		1892	525.6	37		232.4		82	9.5
	B	886	246.1	46.5	1480	158.0	200	71	4.2
		1450	402.8	37		176.0		83	6.2
		1771	491.9	31		189.2		79	9.3
	C	817	226.9	37	1480	117.6	160	70	4
		1361	378.1	27.5		124.3		82	6
		1633	453.6	23		136.3		75	9
400VGSP51 400VGSPL51	O	972	270.0	64	1480	233.3	315	72.6	4.4
		1620	450.0	51		269.0		83.6	6.5
		1900	527.8	43		285.1		78	10
	A	912	253.3	56	1480	187.9	250	74	4.3
		1428	396.7	47		217.5		84	6.2
		1823	506.4	36		223.3		80	9.6
	B	853	236.9	49	1480	157.6	200	72.2	4.2
		1422	395.0	38		177.2		83	6.2
		1728	480.0	31		184.6		79	9.2
	C	877	243.6	40	1480	131.2	160	72.8	4
		1362	378.3	30		136.5		81.5	6
		1598	443.9	23.4		135.7		75	9
400VGSP94 400VGSPL94	O	1100	305.6	109	1480	429.5	630	76	5
		1750	486.1	94		544.1		82.3	6.8
		2100	583.3	82		601.0		78	12
	A	960	266.7	91	1480	317.1	500	75	5
		1650	458.3	76		408.8		83.5	6.8
		1980	550.0	65		443.5		79	11.5
	B	942	261.7	74	1480	256.4	400	74	5
		1570	436.1	62		319.3		83	6.5
		1884	523.3	51.5		340.8		77.5	11
	C	906	251.7	62	1480	206.6	315	74	5
		1510	419.4	50		256.9		80	6.2
		1724	478.9	38		258.5		69	10

Table of Performance									
pump type	Capacity		head m	speed r/min	Power(kw)		Efficiency %	(NPSH)r m	
	m ³ /h	L/S			Shaft power	Motor power			
400VGSP80 400VG SPL80	O	930	258.3	92.5	1480	296.4	500	79	5
		1500	416.7	80		398.4		82	6.6
		1860	516.7	68.5		439.0		79	11
	A	870	241.7	77.5	1480	254.9	400	72	5
		1450	402.8	67		312.6		84.6	6.5
		1797	499.2	55.5		336.8		80.6	10.5
	B	820	227.8	68	1480	213.8	315	71	5
		1426	396.1	55.5		268.6		80.2	6.4
		1632	453.3	49.5		287.5		76.5	10
	C	768	213.3	57	1480	164.4	250	72.5	5
		1280	355.6	47.5		199.4		83	6.2
		1536	426.7	39		209.1		78	9.5
400VGSP160 400VG SPL160	O	1102	306.1	180.5	1480	694.2	1120	78	6.5
		1836	510.0	160		987.3		81	7.5
		2145	595.8	149		1115.4		78	11
	A	1000	277.8	157	1480	569.9	1000	75	6
		1735	481.9	136		802.9		80	7
		2100	583.3	121		922.3		75	10.8
	B	974	270.6	131	1480	469.4	710	74	6
		1624	451.1	112		630.8		78.5	6.8
		2000	555.6	95		708.5		73	10.5
	C	922	256.1	110	1480	363.3	630	76	6
		1537	426.9	91		494.5		77	6.5
		1912	531.1	75.5		561.4		70	10
400VGSP139 400VG SPL139	O	1013	281.4	157	1480	577.3	1000	75	6
		1670	463.9	139		810.1		78	7
		2026	562.8	126		951.9		73	10.5
	A	944	262.2	142	1480	480.1	800	76	6
		1504	417.8	122		632.3		79	6.8
		1888	524.4	104		712.7		75	10.2
	B	987	274.2	117	1480	413.6	630	76	6
		1451	403.1	99		501.3		78	6.5
		1741	483.6	86		558.3		73	10
	C	863	239.7	97	1480	307.9	450	74	6
		1343	373.1	79.5		377.5		77	6.5
		1611	447.5	68		414.2		72	9.5
400VGSP32 400VG SPL32	O	1100	305.6	44.5	1480	176.5	200	75.5	6.5
		1750	486.1	33		181.7		86.5	7.5
		1924	534.4	27.6		183.0		79	12
	A	1042	456.9	36	1480	142.8	160	71.5	6.5
		1645	527.8	28		144.1		87	7.4
		1900	291.7	20		137.9		75	12
	B	1050	456.1	30.5	1480	122.8	132	71	6.5
		1642	523.9	21		111.7		84	7.3
		1886	266.9	15.6		108.2		74	12
	C	961	266.9	24.5	1480	91.6	110	70	6.5
		1420	394.4	19		87.4		84	7.3
		1720	477.8	12.3		81.1		71	12
400VGSP31 400VG SPL31	O	853	236.9	36	1480	115.3	160	72.5	6.2
		1422	395.0	31		142.9		84	7.2
		1770	491.7	25		150.6		80	12
	A	801	222.5	34	1480	105.9	132	70	6.2
		1336	371.1	26.3		116.6		82	7.1
		1603	445.3	21		117.5		78	12
	B	763	211.9	29	1480	87.9	110	68.5	6.2
		1271	353.1	22.5		98.5		79	7.1
		1525	423.6	18		99.6		75	11
	C	713	198.1	24.5	1480	74.9	90	63.5	6.2
		1188	330.0	17.8		73.8		78	7.1
		1426	396.1	13		70.1		72	11

Table of Performance

pump type	Capacity		head m	speed r/min	Power(kw)		Efficiency %	(NPSH)r m	
	m ³ /h	L/S			Shaft power	Motor power			
450VGSP43 450VGSPL43	O	1646	457.2	55	1480	328.6	450	75	9
		2743	761.9	43.5		379.9		85.5	9.5
		3220	894.4	29		348.2		73	12
	A	1581	439.2	46.2	1480	258.2	355	77	9
		2635	731.9	35		293.6		85.5	9.5
		3162	878.3	27.6		339.4		70	12
	B	1538	427.2	37.8	1480	201.6	280	78.5	9
		2563	711.9	27.5		228.4		84	9.5
		3076	854.4	21		262.5		67	12
	C	1490	413.9	30.7	1480	158.6	220	78.5	9
		2484	690.0	21.5		179.5		81	9.5
		2981	828.1	16.3		206.7		64	12
450VGSP42 450VGSPL42	O	1339	371.9	53.4	1480	263.0	400	74	8.5
		2232	620.0	42		315.1		81	9
		2661	739.2	28.5		282.8		73	11
	A	1253	348.1	47.3	1480	215.1	315	75	8.5
		2088	580.0	36		242.2		84.5	9
		2505.5	696.0	28.3		279.7		69	11
	B	1192	331.1	39	1480	174.1	250	72.7	8.5
		1987	551.9	30		197.9		82	9
		2384.5	662.4	22.6		227.4		64.5	11
	C	1114.5	309.6	33.2	1480	141.9	200	71	8.5
		1858	516.1	25		161.1		78.5	9
		2229	619.2	20		185.3		65.5	11
400VGSP70 400VGSPL70	O	1566	435.0	80.5	1480	483.3	630	71	6
		2610	725.0	71.3		575.7		88	7
		3132	870.0	62		618.3		85.5	12
	A	1458	405.0	69.5	1480	394.1	560	70	6
		2430	675.0	60.5		465.4		86	7
		2916	810.0	51		490.7		82.5	12
	B	1330	369.4	57.5	1480	303.9	400	68.5	6
		2232	620.0	50		361.7		84	6.8
		2678	743.9	43		377.7		83	11
	C	1242	345.0	47.5	1480	254.9	315	63	6
		2072	575.6	39		268.3		82	6.8
		2506	696.1	32.7		275.4		81	11
400VGSP67 400VGSPL67	O	1469	408.1	75	1480	454.4	630	66	6
		2448	680.0	67		558.1		80	7
		2650	736.1	64		584.4		79	11
	A	1361	378.1	73	1480	416.1	500	65	6
		2268	630.0	59.5		465.0		79	6.5
		2550	708.3	49		447.6		76	10.6
	B	1253	348.1	64	1480	299.0	400	73	6
		2088	580.0	50		364.4		78	6.5
		2506	696.1	43		391.1		75	10.5
	C	1166	323.9	53	1480	254.9	315	66	6
		1944	540.0	41.5		285.2		77	6.4
		2333	648.1	34		295.8		73	10
500VGSP75 500VGSPL75	O	2330	647.2	84.5	1480	630.5	800	85	7
		3080	855.6	75		714.6		88	8.5
		3900	1083.3	60		776.8		82	12
	A	2250	625.0	81.5	1480	616.3	710	81	7
		2850	791.7	72.5		646.5		87	8.5
		3420	950.0	63.5		703.8		84	12
	B	2100	583.3	76.5	1480	539.9	630	81	7
		2640	733.3	67		559.9		86	8.5
		3170	880.6	57		607.3		81	12
	C	1960	544.4	70.5	1480	464.4	560	81	7
		2450	680.6	63		494.3		85	8.5
		2940	816.7	54		540.2		80	12

Outline & installing dimensions of type **VGSP-VG SPL** pumps (with base plate)



Outline & Installing Dimensions of Tpe VGSP Pumps

With base plate

	L	L1	L2	L3	L4	L5	L6	L7	L8	L9	L10	L11	B	B1	B2	B3	B4	B5	B6	H	H1	H2	H3	H4	H5	H6	H7	A	d	d4	d5	n4	C
125vgsp550	710	315	415	320	270	210	526	305	1250	206	780	-	300	300	410	340	270	550	550	589	315	32	140	140	475	110	200	318	18.5	25	19	4	3
125vgsp55A	710	315	415	320	270	210	526	305	1250	206	780	-	300	300	410	340	270	550	550	589	315	32	140	140	475	110	200	318	18.5	25	19	4	3
125vgsp55B	710	315	415	320	270	210	526	305	1250	206	780	-	300	300	410	340	270	550	550	589	315	32	140	140	475	110	200	318	18.5	25	19	4	3
125vgsp55C	670	315	415	320	270	210	514	241	1222	206	780	-	300	300	410	340	270	550	550	589	315	32	140	140	430	110	180	279	18.5	25	15	4	3
125vgsp510	710	315	415	320	270	210	526	305	1250	206	780	-	300	300	410	340	270	550	550	589	315	32	140	140	475	110	200	318	18.5	25	19	4	3
125vgsp51A	710	315	415	320	270	210	526	305	1250	206	780	-	300	300	410	340	270	550	550	589	315	32	140	140	475	110	200	318	18.5	25	19	4	3
125vgsp51B	645	315	415	320	270	210	501	254	1184	206	780	-	300	300	410	340	270	550	550	589	315	32	140	140	385	90	160	254	18.5	25	15	4	3
125vgsp51C	600	315	415	320	270	210	501	210	1184	206	780	-	300	300	410	340	270	550	550	589	315	32	140	140	385	90	160	254	18.5	25	15	4	3
125vgsp900	1000	315	415	320	270	210	614	368	1485	206	933	-	300	300	410	340	270	550	675	589	315	32	140	140	640	110	280	457	18.5	30	24	4	4
125vgsp90A	1000	315	415	320	270	210	614	368	1485	206	933	-	300	300	410	340	270	550	675	589	315	32	140	140	640	110	280	457	18.5	30	24	4	4
125vgsp90B	925	315	415	320	270	210	592	349	1390	206	875	-	300	300	410	340	270	550	602	589	315	32	140	140	575	110	250	406	18.5	25	24	4	4
125vgsp90C	710	315	415	320	270	210	527	305	1250	206	780	-	300	300	410	340	270	550	550	589	315	32	140	140	475	110	200	318	18.5	25	19	4	4
125vgsp820	1000	315	415	320	270	210	614	368	1485	206	933	-	300	300	410	340	270	550	675	589	315	32	140	140	640	110	280	457	18.5	30	24	4	4
125vgsp82A	810	315	415	320	270	210	543	311	1310	206	826	-	300	300	410	340	270	550	550	589	315	32	140	140	530	110	225	356	18.5	25	19	4	4
125vgsp82B	710	315	415	320	270	210	527	305	1250	206	780	-	300	300	410	340	270	550	550	589	315	32	140	140	475	110	200	318	18.5	25	19	4	4
125vgsp82C	710	315	415	320	270	210	527	305	1250	206	780	-	300	300	410	340	270	550	550	589	315	32	140	140	475	110	200	318	18.5	25	19	4	4
150vgsp750	1050	315	415	320	270	210	614	419	1485	206	933	-	330	330	470	400	330	550	675	634	355	32	170	170	640	110	280	457	18.5	30	24	4	4
150vgsp75A	1000	315	415	320	270	210	614	368	1485	206	933	-	330	330	470	400	330	550	675	634	355	32	170	170	640	110	280	457	18.5	30	24	4	4
150vgsp75B	1000	315	415	320	270	210	614	368	1485	206	933	-	330	330	470	400	330	550	675	634	355	32	170	170	640	110	280	457	18.5	30	24	4	4
150vgsp75C	925	315	415	320	270	210	592	349	1390	206	875	-	330	330	470	400	330	550	602	634	355	32	170	170	575	110	250	406	18.5	25	24	4	4
150vgsp680	1000	315	415	320	270	210	614	368	1485	206	933	-	330	330	470	400	330	550	675	634	355	32	170	170	640	110	280	457	18.5	30	24	4	4
150vgsp68A	925	315	415	320	270	210	592	349	1390	206	875	-	330	330	470	400	330	550	602	634	355	32	170	170	575	110	250	406	18.5	25	24	4	4
150vgsp68B	810	315	415	320	270	210	543	311	1310	206	826	-	330	330	470	400	330	550	550	634	355	32	170	170	530	110	225	356	18.5	25	19	4	4
150vgsp68C	710	315	415	320	270	210	527	305	1250	206	780	-	330	330	470	400	330	550	550	634	355	32	170	170	475	110	200	318	18.5	25	19	4	4
150vgsp1230	1295	381	515	320	270	210	740	508	1700	306	959	-	330	330	470	400	330	550	725	664	355	36	170	170	770	130	315	508	18.5	30	28	4	4
150vgsp123A	1210	381	515	320	270	210	740	508	1700	306	959	-	330	330	470	400	330	550	725	664	355	36	170	170	770	130	315	508	18.5	30	28	4	4
150vgsp123B	1210	381	515	320	270	210	740	457	1700	306	959	-	330	330	470	400	330	550	725	664	355	36	170	170	770	130	315	508	18.5	30	28	4	4
150vgsp123C	1050	381	515	320	270	210	714	419	1585	306	933	-	330	330	470	400	330	550	725	664	355	36	170	170	640	110	280	457	18.5	30	24	4	4

Outline & Installing Dimensions of Tpye VGSP Pumps

With base plate

	L	L1	L2	L3	L4	L5	L6	L7	L8	L9	L10	L11	B	B1	B2	B3	B4	B5	B6	H	H1	H2	H3	H4	H5	H6	H7	A	d	ø4	ø5	n4	C	
125vgsp190	Y 315L 1-2	1210	381	515	320	270	210	740	508	1700	306	959	-	330	330	470	400	330	550	725	664	355	36	170	170	770	130	315	508	18.5	30	28	4	4
125vgsp19A	Y 315M-2	1210	381	515	320	270	210	740	457	1700	306	959	-	330	330	470	400	330	550	725	664	355	36	170	170	770	130	315	508	18.5	30	28	4	4
125vgsp19B	Y 315S-2	1155	381	515	320	270	210	740	406	1700	306	959	-	330	330	470	400	330	550	725	664	355	36	170	170	770	130	315	508	18.5	30	28	4	4
125vgsp19C	Y 280S-2	1000	381	515	320	270	210	714	368	1585	306	933	-	330	330	470	400	330	550	675	664	355	36	170	170	640	110	280	457	18.5	30	24	4	4
125vgsp590	Y 315M-2	1210	381	515	390	340	250	705	457	1740	240	1100	-	370	370	530	450	370	720	720	694	400	36	200	200	770	130	315	508	24	30	28	4	4
125vgsp59A	Y 315S-2	1155	381	515	390	340	250	705	406	1740	240	1100	-	370	370	530	450	370	720	720	694	400	36	200	200	770	130	315	508	24	30	28	4	4
125vgsp59B	Y 280M-2	1050	381	515	390	340	250	679	419	1640	240	1040	-	370	370	530	450	370	720	720	694	400	36	200	200	640	130	280	457	24	25	24	4	4
125vgsp59C	Y 280S-2	1000	381	515	390	340	250	679	368	1640	240	1040	-	370	370	530	450	370	720	720	694	400	36	200	200	640	130	280	457	24	25	24	4	4
125vgsp610	Y 315M-2	1210	381	515	390	340	250	705	457	1740	240	1100	-	370	370	530	450	370	720	720	694	400	36	200	200	770	130	315	508	24	30	28	4	4
125vgsp61A	Y 315S-2	1155	381	515	390	340	250	705	406	1740	240	1100	-	370	370	530	450	370	720	720	694	400	36	200	200	770	130	315	508	24	30	28	4	4
125vgsp61B	Y 280M-2	1050	381	515	390	340	250	679	419	1640	240	1040	-	370	370	530	450	370	720	720	694	400	36	200	200	640	130	280	457	24	25	24	4	4
125vgsp61C	Y 280S-2	1000	381	515	390	340	250	679	368	1640	240	1040	-	370	370	530	450	370	720	720	694	400	36	200	200	640	130	280	457	24	25	24	4	4
125vgsp108A	Y 315L 2-2	1295	381	515	390	340	250	705	508	1740	240	1100	-	370	370	530	450	370	720	720	714	400	36	200	200	770	130	315	508	24	30	28	4	4
125vgsp108B	Y 315L 1-2	1210	381	515	390	340	250	705	508	1740	240	1100	-	370	370	530	450	370	720	720	714	400	36	200	200	770	130	315	508	24	30	28	4	4
125vgsp108C	Y 315S-2	1155	381	515	390	340	250	705	406	1740	240	1100	-	370	370	530	450	370	720	720	714	400	36	200	200	770	130	315	508	24	30	28	4	4
125vgsp1000	Y 315L 2-2	1295	381	515	390	340	250	705	508	1740	240	1100	-	370	370	530	450	370	720	720	714	400	36	200	200	770	130	315	508	24	30	28	4	4
150vgsp100A	Y 315L 1-2	1210	381	515	390	340	250	705	508	1740	240	1100	-	370	370	530	450	370	720	720	714	400	36	200	200	770	130	315	508	24	30	28	4	4
150vgsp100B	Y 315S-2	1155	381	515	390	340	250	705	406	1740	240	1100	-	370	370	530	450	370	720	720	714	400	36	200	200	770	130	315	508	24	30	28	4	4
150vgsp100C	Y 280M-2	1050	381	515	390	340	250	679	419	1640	240	1040	-	370	370	530	450	370	720	720	714	400	36	200	200	640	130	280	457	24	25	24	4	4
150vgsp140	Y 132S-4	470	315	415	320	270	210	452	140	1050	206	660	-	300	300	410	340	270	550	400	589	315	32	140	140	315	90	132	216	18.5	20	12	4	3
150vgsp14A	Y 112M-4	400	315	415	320	270	210	413	140	1050	206	660	-	300	300	410	340	270	550	400	589	315	32	140	140	265	90	112	190	18.5	20	12	4	3
150vgsp14B	Y 100L 2-4	380	315	415	320	270	210	406	140	1050	206	660	-	300	300	410	340	270	550	400	589	315	32	140	140	245	90	100	160	18.5	20	12	4	3
150vgsp14C	Y 100L 2-4	380	315	415	320	270	210	406	140	1050	206	660	-	300	300	410	340	270	550	400	589	315	32	140	140	245	90	100	160	18.5	20	12	4	3
150vgsp130	Y 112M-4	400	315	415	320	270	210	413	140	1050	206	660	-	300	300	410	340	270	550	400	589	315	32	140	140	265	90	112	190	18.5	20	12	4	3
150vgsp13A	Y 100L 2-4	380	315	415	320	270	210	406	140	1050	206	660	-	300	300	410	340	270	550	400	589	315	32	140	140	245	90	100	160	18.5	20	12	4	3
150vgsp13B	Y 100L 2-4	380	315	415	320	270	210	406	140	1050	206	660	-	300	300	410	340	270	550	400	589	315	32	140	140	245	90	100	160	18.5	20	12	4	3
150vgsp13C	Y 100L 1-4	380	315	415	320	270	210	406	140	1050	206	660	-	300	300	410	340	270	550	400	589	315	32	140	140	245	90	100	160	18.5	20	12	4	3

Outline & Installing Dimensions of Tpye VGSP Pumps

With base plate

	L	L1	L2	L3	L4	L5	L6	L7	L8	L9	L10	L11	B	B1	B2	B3	B4	B5	B6	H	H1	H2	H3	H4	H5	H6	H7	A	d	d4	d5	n4	C
125vgs220	600	315	415	320	270	210	501	210	1184	206	780	-	300	300	410	340	270	550	550	589	315	32	140	140	385	90	160	254	18.5	25	15	4	3
125vgs22B	508	315	415	320	270	210	452	178	1050	206	660	-	300	300	410	340	270	550	400	589	315	32	140	140	315	90	132	216	18.5	20	12	4	3
125vgs22C	470	315	415	320	270	210	452	140	1050	206	660	-	300	300	410	340	270	550	400	589	315	32	140	140	315	90	132	216	18.5	20	12	4	3
125vgs210	600	315	415	320	270	210	501	210	1184	206	780	-	300	300	410	340	270	550	550	589	315	32	140	140	385	90	160	254	18.5	25	15	4	3
125vgs21A	508	315	415	320	270	210	452	178	1050	206	660	-	300	300	410	340	270	550	400	589	315	32	140	140	315	90	132	216	18.5	20	12	4	3
125vgs21B	470	315	415	320	270	210	452	140	1050	206	660	-	300	300	410	340	270	550	400	589	315	32	140	140	315	90	132	216	18.5	20	12	4	3
125vgs21C	400	315	415	320	270	210	413	140	1050	206	660	-	300	300	410	340	270	550	400	589	315	32	140	140	265	90	112	190	18.5	20	12	4	3
125vgs390	710	315	415	320	270	210	515	279	1222	206	780	-	330	330	410	340	270	550	550	624	315	32	140	140	430	110	180	279	18.5	25	15	4	4
125vgs39A	645	315	415	320	270	210	502	254	1184	206	780	-	330	330	410	340	270	550	550	624	315	32	140	140	385	90	160	254	18.5	25	15	4	4
125vgs39B	645	315	415	320	270	210	502	254	1184	206	780	-	330	330	410	340	270	550	550	624	315	32	140	140	385	90	160	254	18.5	25	15	4	4
125vgs39C	600	315	415	320	270	210	502	210	1184	206	780	-	330	330	410	340	270	550	550	624	315	32	140	140	385	90	160	254	18.5	25	15	4	4
125vgs350	670	315	415	320	270	210	515	241	1222	206	780	-	330	330	410	340	270	550	550	624	315	32	140	140	430	110	180	279	18.5	25	15	4	4
125vgs35A	645	315	415	320	270	210	502	254	1184	206	780	-	330	330	410	340	270	550	550	624	315	32	140	140	385	90	160	254	18.5	25	15	4	4
125vgs35B	600	315	415	320	270	210	502	210	1184	206	780	-	330	330	410	340	270	550	550	624	315	32	140	140	385	90	160	254	18.5	25	15	4	4
125vgs35C	508	315	415	320	270	210	453	178	1050	206	660	-	330	330	410	340	270	550	400	624	315	32	140	140	315	90	132	216	18.5	20	12	4	4
125vgs190	645	315	415	320	270	210	502	254	1184	206	780	-	330	330	470	400	330	550	550	634	355	32	170	170	385	90	160	254	18.5	25	15	4	4
150vgs19A	600	315	415	320	270	210	502	210	1184	206	780	-	330	330	470	400	330	550	550	634	355	32	170	170	385	90	160	254	18.5	25	15	4	4
150vgs19B	508	315	415	320	270	210	453	178	1050	206	660	-	330	330	470	400	330	550	400	634	355	32	170	170	315	90	132	216	18.5	20	12	4	4
150vgs19C	508	315	415	320	270	210	453	178	1050	206	660	-	330	330	470	400	330	550	400	634	355	32	170	170	315	90	132	216	18.5	20	12	4	4
150vgs170	600	315	415	320	270	210	502	210	1184	206	780	-	330	330	470	400	330	550	550	634	355	32	170	170	385	90	160	254	18.5	25	15	4	4
150vgs17A	508	315	415	320	270	210	453	178	1050	206	660	-	330	330	470	400	330	550	400	634	355	32	170	170	315	90	132	216	18.5	20	12	4	4
150vgs17B	508	315	415	320	270	210	453	178	1050	206	660	-	330	330	470	400	330	550	400	634	355	32	170	170	315	90	132	216	18.5	20	12	4	4
150vgs17C	470	315	415	320	270	210	453	140	1050	206	660	-	330	330	470	400	330	550	400	634	355	32	170	170	315	90	132	216	18.5	20	12	4	4
150vgs310	710	315	415	320	270	210	527	305	1250	206	780	-	330	330	470	400	330	550	550	664	355	32	170	170	475	110	200	318	18.5	25	19	4	4
150vgs31A	670	315	415	320	270	210	515	241	1222	206	780	-	330	330	470	400	330	550	550	664	355	32	170	170	430	110	180	279	18.5	25	15	4	4
150vgs31B	645	315	415	320	270	210	502	254	1184	206	780	-	330	330	470	400	330	550	550	664	355	32	170	170	385	90	160	254	18.5	25	15	4	4
150vgs31C	600	315	415	320	270	210	502	210	1184	206	780	-	330	330	470	400	330	550	550	664	355	32	170	170	385	90	160	254	18.5	25	15	4	4

Outline & Installing Dimensions of Tpye VGSP Pumps

With base plate

	L	L1	L2	L3	L4	L5	L6	L7	L8	L9	L10	L11	B	B1	B2	B3	B4	B5	B6	H	H1	H2	H3	H4	H5	H6	H7	A	d	d4	d5	m4	C	
150vgs290	Y 180M-4	670	315	415	320	270	210	515	241	1222	206	780	-	330	330	470	400	330	550	550	664	355	32	170	170	430	110	180	279	18.5	25	15	4	4
150vgs29A	Y 160L-4	645	315	415	320	270	210	502	254	1184	206	780	-	330	330	470	400	330	550	550	664	355	32	170	170	385	90	160	254	18.5	25	15	4	4
150vgs29B	Y 160M-4	600	315	415	320	270	210	502	210	1184	206	780	-	330	330	470	400	330	550	550	664	355	32	170	170	385	90	160	254	18.5	25	15	4	4
150vgs29C	Y 160M-4	600	315	415	320	270	210	502	210	1184	206	780	-	330	330	470	400	330	550	550	664	355	32	170	170	385	90	160	254	18.5	25	15	4	4
150vgs29D	Y 225M-4	840	315	415	320	270	210	573	311	1310	206	826	-	370	370	470	400	330	550	550	699	355	32	170	170	530	110	225	356	18.5	25	19	4	4
150vgs29E	Y 225S-4	815	315	415	320	270	210	573	286	1310	206	826	-	370	370	470	400	330	550	550	699	355	32	170	170	530	110	225	356	18.5	25	19	4	4
150vgs29F	Y 200L-4	710	315	415	320	270	210	527	305	1250	206	780	-	370	370	470	400	330	550	550	699	355	32	170	170	475	110	200	318	18.5	25	19	4	4
150vgs29G	Y 180L-4	710	315	415	320	270	210	515	279	1222	206	780	-	370	370	470	400	330	550	550	699	355	32	170	170	430	110	180	279	18.5	25	15	4	4
150vgs29H	Y 225M-4	840	315	415	320	270	210	573	311	1310	206	826	-	370	370	470	400	330	550	550	699	355	32	170	170	530	110	225	356	18.5	25	19	4	4
150vgs29I	Y 200L-4	710	315	415	320	270	210	527	305	1250	206	780	-	370	370	470	400	330	550	550	699	355	32	170	170	475	110	200	318	18.5	25	19	4	4
150vgs29J	Y 200L-4	710	315	415	320	270	210	527	305	1250	206	780	-	370	370	470	400	330	550	550	699	355	32	170	170	475	110	200	318	18.5	25	19	4	4
150vgs29K	Y 180M-4	670	315	415	320	270	210	515	241	1222	206	780	-	370	370	470	400	330	550	550	699	355	32	170	170	430	110	180	279	18.5	25	15	4	4
200vgs140	Y 180M-4	670	381	515	390	340	250	580	241	1345	240	870	-	370	370	530	450	370	620	510	694	400	36	200	200	430	110	180	279	24	25	15	4	4
200vgs14A	Y 160L-4	645	381	515	390	340	250	567	254	1310	240	845	-	370	370	530	450	370	620	480	694	400	36	200	200	385	110	160	254	24	25	15	4	4
200vgs14B	Y 160M-4	600	381	515	390	340	250	567	210	1310	240	845	-	370	370	530	450	370	620	480	694	400	36	200	200	385	110	160	254	24	25	15	4	4
200vgs14C	Y 160M-4	600	381	515	390	340	250	567	210	1310	240	845	-	370	370	530	450	370	620	480	694	400	36	200	200	385	110	160	254	24	25	15	4	4
200vgs150	Y 160L-4	645	381	515	390	340	250	567	254	1310	240	845	-	370	370	530	450	370	620	480	694	400	36	200	200	385	110	160	254	24	25	15	4	4
200vgs15A	Y 160M-4	600	381	515	390	340	250	567	210	1310	240	845	-	370	370	530	450	370	620	480	694	400	36	200	200	385	110	160	254	24	25	15	4	4
200vgs15B	Y 160M-4	600	381	515	390	340	250	567	210	1310	240	845	-	370	370	530	450	370	620	480	694	400	36	200	200	385	110	160	254	24	25	15	4	4
200vgs15C	Y 160M-4	600	381	515	390	340	250	567	210	1310	240	845	-	370	370	530	450	370	620	480	694	400	36	200	200	385	110	160	254	24	25	15	4	4
200vgs270	Y 200L-4	710	381	515	390	340	250	592	305	1385	240	915	-	370	370	530	450	370	620	620	714	400	36	200	200	475	110	200	318	24	25	19	4	4
200vgs27A	Y 180L-4	710	381	515	390	340	250	580	279	1345	240	870	-	370	370	530	450	370	620	510	714	400	36	200	200	430	110	180	279	24	25	15	4	4
200vgs27B	Y 180M-4	670	381	515	390	340	250	580	241	1345	240	870	-	370	370	530	450	370	620	510	714	400	36	200	200	430	110	180	279	24	25	15	4	4
200vgs27C	Y 160L-4	645	381	515	390	340	250	567	254	1310	240	845	-	370	370	530	450	370	620	480	714	400	36	200	200	385	110	160	254	24	25	15	4	4
200vgs250	Y 200L-4	710	381	515	390	340	250	592	305	1385	240	915	-	370	370	530	450	370	620	620	714	400	36	200	200	475	110	200	318	24	25	19	4	4
200vgs25A	Y 180M-4	670	381	515	390	340	250	580	241	1345	240	870	-	370	370	530	450	370	620	510	714	400	36	200	200	430	110	180	279	24	25	15	4	4
200vgs25B	Y 160L-4	645	381	515	390	340	250	567	254	1310	240	845	-	370	370	530	450	370	620	480	714	400	36	200	200	385	110	160	254	24	25	15	4	4
200vgs25C	Y 160M-4	600	381	515	390	340	250	567	210	1310	240	845	-	370	370	530	450	370	620	480	714	400	36	200	200	385	110	160	254	24	25	15	4	4

Outline & Installing Dimensions of Type VGSP Pumps

With base plate

	L	L1	L2	L3	L4	L5	L6	L7	L8	L9	L10	L11	B	B1	B2	B3	B4	B5	B6	H	H1	H2	H3	H4	H5	H6	H7	A	d	d4	d5	n4	C
200vgsp470	1000	381	515	390	340	250	679	368	1640	240	1040	-	370	370	530	450	370	720	720	744	400	36	200	200	640	130	280	457	24	25	24	4	4
200vgsp47A	925	381	515	390	340	250	657	349	1520	240	1000	-	370	370	530	450	370	720	720	744	400	36	200	200	575	130	250	406	24	25	24	4	4
200vgsp47B	815	381	515	390	340	250	638	286	1440	240	965	-	370	370	530	450	370	720	570	744	400	36	200	200	530	110	225	356	24	25	19	4	4
200vgsp47C	710	381	515	390	340	250	592	305	1385	240	915	-	370	370	530	450	370	620	620	744	400	36	200	200	475	110	200	318	24	25	19	4	4
200vgsp430	925	381	515	390	340	250	657	349	1520	240	1000	-	370	370	530	450	370	720	720	744	400	36	200	200	575	130	250	406	24	25	24	4	4
200vgsp43A	840	381	515	390	340	250	638	311	1440	240	965	-	370	370	530	450	370	720	570	744	400	36	200	200	530	110	225	356	24	25	19	4	4
200vgsp43B	710	381	515	390	340	250	592	305	1385	240	915	-	370	370	530	450	370	620	620	744	400	36	200	200	475	110	200	318	24	25	19	4	4
200vgsp43C	710	381	515	390	340	250	580	279	1345	240	870	-	370	370	530	450	370	620	510	744	400	36	200	200	430	110	180	279	24	25	15	4	4
200vgsp760	1185	381	515	390	340	250	735	406	1740	240	1100	-	450	450	630	560	480	720	720	789	400	40	200	200	770	130	315	508	24	30	28	4	4
200vgsp76A	1050	381	515	390	340	250	679	419	1640	240	1040	-	450	450	630	560	480	720	720	789	400	40	200	200	640	130	280	457	24	25	24	4	4
200vgsp76B	1000	381	515	390	340	250	679	368	1640	240	1040	-	450	450	630	560	480	720	720	789	400	40	200	200	640	130	280	457	24	25	24	4	4
200vgsp76C	925	381	515	390	340	250	657	349	1520	240	1000	-	450	450	630	560	480	720	720	789	400	40	200	200	575	130	250	406	24	25	24	4	4
200vgsp690	1185	381	515	390	340	250	735	406	1740	240	1100	-	450	450	630	560	480	720	720	789	400	40	200	200	770	130	315	508	24	30	28	4	4
200vgsp69A	1000	381	515	390	340	250	679	368	1640	240	1040	-	450	450	630	560	480	720	720	789	400	40	200	200	640	130	280	457	24	25	24	4	4
200vgsp69B	925	381	515	390	340	250	657	349	1520	240	1000	-	450	450	630	560	480	720	720	789	400	40	200	200	575	130	250	406	24	25	24	4	4
200vgsp69C	840	381	515	390	340	250	638	311	1440	240	965	-	450	450	630	560	480	720	570	789	400	40	200	200	530	110	225	356	24	25	19	4	4
200vgsp210	815	381	515	390	340	250	638	286	1440	240	965	-	400	400	530	450	370	720	570	729	400	36	200	200	530	110	225	356	24	25	19	4	4
200vgsp21A	710	381	515	390	340	250	592	305	1385	240	915	-	400	400	530	450	370	620	620	729	400	36	200	200	475	110	200	318	24	25	19	4	4
200vgsp21B	710	381	515	390	340	250	580	279	1345	240	870	-	400	400	530	450	370	620	510	729	400	36	200	200	430	110	180	279	24	25	15	4	4
200vgsp21C	670	381	515	390	340	250	580	241	1345	240	870	-	400	400	530	450	370	620	510	729	400	36	200	200	430	110	180	279	24	25	15	4	4
200vgsp200	710	381	515	390	340	250	592	305	1385	240	915	-	400	400	530	450	370	620	620	729	400	36	200	200	475	110	200	318	24	25	19	4	4
200vgsp20A	710	381	515	390	340	250	592	305	1385	240	915	-	400	400	530	450	370	620	620	729	400	36	200	200	475	110	200	318	24	25	19	4	4
200vgsp20B	710	381	515	390	340	250	580	279	1345	240	870	-	400	400	530	450	370	620	510	729	400	36	200	200	430	110	180	279	24	25	15	4	4
200vgsp20C	670	381	515	390	340	250	580	241	1345	240	870	-	400	400	530	450	370	620	510	729	400	36	200	200	430	110	180	279	24	25	15	4	4
200vgsp380	1000	381	515	390	340	250	679	368	1640	240	1040	-	400	400	530	450	370	720	720	759	400	36	200	200	640	130	280	457	24	25	24	4	4
200vgsp38A	925	381	515	390	340	250	657	349	1520	240	1000	-	400	400	530	450	370	720	720	759	400	36	200	200	575	130	250	406	24	25	24	4	4
200vgsp38B	815	381	515	390	340	250	638	286	1440	240	965	-	400	400	530	450	370	720	570	759	400	36	200	200	530	110	225	356	24	25	19	4	4
200vgsp38C	710	381	515	390	340	250	592	305	1385	240	915	-	400	400	530	450	370	620	620	759	400	36	200	200	475	110	200	318	24	25	19	4	4

Outline & Installing Dimensions of Type VGSP Pumps

With base plate

	L	L1	L2	L3	L4	L5	L6	L7	L8	L9	L10	L11	B	B1	B2	B3	B4	B5	B6	H	H1	H2	H3	H4	H5	H6	H7	A	d	d4	d5	n4	C	
200vgsp350	Y 250M-4	925	381	515	390	340	250	657	349	1520	240	1000	-	400	400	530	450	370	720	720	759	400	36	200	200	575	130	250	406	24	25	24	4	4
200vgsp35A	Y 225M-4	840	381	515	390	340	250	638	311	1440	240	965	-	400	400	530	450	370	720	570	759	400	36	200	200	530	110	225	356	24	25	19	4	4
200vgsp35B	Y 225S-4	815	381	515	390	340	250	638	286	1440	240	965	-	400	400	530	450	370	720	570	759	400	36	200	200	530	110	225	356	24	25	19	4	4
200vgsp35C	Y 200L-4	710	381	515	390	340	250	592	305	1385	240	915	-	400	400	530	450	370	620	620	759	400	36	200	200	475	110	200	318	24	25	19	4	4
200vgsp660	Y 315M-4	1240	433	590	480	430	300	766	457	1920	305	1200	-	450	450	630	560	490	790	790	885	500	40	200	200	770	140	315	508	24	30	28	4	5
200vgsp66A	Y 315S-4	1185	433	590	480	430	300	766	406	1920	305	1200	-	450	450	630	560	490	790	790	885	500	40	200	200	770	140	315	508	24	30	28	4	5
200vgsp66B	Y 280S-4	1000	433	590	480	430	300	710	368	1780	305	1170	-	450	450	630	560	490	790	790	885	500	40	200	200	640	130	280	457	24	30	24	4	5
200vgsp66C	Y 250M-4	925	433	590	480	430	300	688	349	1680	305	1080	-	450	450	630	560	490	790	690	885	500	40	200	200	575	130	250	406	24	30	24	4	5
200vgsp600	Y 315S-4	1185	433	590	480	430	300	766	406	1920	305	1200	-	450	450	630	560	490	790	790	885	500	40	200	200	770	140	315	508	24	30	28	4	5
200vgsp60A	Y 280M-4	1050	433	590	480	430	300	710	419	1780	305	1170	-	450	450	630	560	490	790	790	885	500	40	200	200	640	130	280	457	24	30	24	4	5
200vgsp60B	Y 280S-4	1000	433	590	480	430	300	710	368	1780	305	1170	-	450	450	630	560	490	790	790	885	500	40	200	200	640	130	280	457	24	30	24	4	5
200vgsp60C	Y 225M-4	840	433	590	480	430	300	669	311	1680	305	1080	-	450	450	630	560	490	790	690	885	500	40	200	200	530	130	225	356	24	30	19	4	5
200vgsp105B	Y 315L2-4	1325	433	590	480	430	300	766	508	1920	305	1200	-	600	500	770	700	630	940	790	955	500	42	300	300	770	140	315	508	24	30	28	4	5
200vgsp105C	Y 315M-4	1240	433	590	480	430	300	766	457	1920	305	1200	-	600	500	770	700	630	940	790	955	500	42	300	300	770	140	315	508	24	30	28	4	5
200vgsp90A	Y 315L2-4	1325	433	590	480	430	300	766	508	1920	305	1200	-	600	500	770	700	630	940	790	955	500	42	300	300	770	140	315	508	24	30	28	4	5
200vgsp90B	Y 315L1-4	1240	433	590	480	430	300	766	508	1920	305	1200	-	600	500	770	700	630	940	790	955	500	42	300	300	770	140	315	508	24	30	28	4	5
200vgsp90C	Y 315S-4	1185	433	590	480	430	300	766	406	1920	305	1200	-	600	500	770	700	630	940	790	955	500	42	300	300	770	140	315	508	24	30	28	4	5
250vgsp300	Y 280S-4	1000	433	590	480	430	300	710	368	1780	305	1170	-	450	450	630	560	490	790	790	870	500	42	240	240	640	130	280	457	24	30	24	4	5
250vgsp30A	Y 280S-4	1000	433	590	480	430	300	710	368	1780	305	1170	-	450	450	630	560	490	790	790	870	500	42	240	240	640	130	280	457	24	30	24	4	5
250vgsp30B	Y 250M-4	925	433	590	480	430	300	688	349	1680	305	1080	-	450	450	630	560	490	790	690	870	500	42	240	240	575	130	250	406	24	30	24	4	5
250vgsp30C	Y 225S-4	815	433	590	480	430	300	669	286	1680	305	1080	-	450	450	630	560	490	790	690	870	500	42	240	240	530	130	225	356	24	30	19	4	5
250vgsp280	Y 280S-4	1000	433	590	480	430	300	710	368	1780	305	1170	-	450	450	630	560	490	790	790	870	500	42	240	240	640	130	280	457	24	30	24	4	5
250vgsp28A	Y 250M-4	925	433	590	480	430	300	688	349	1680	305	1080	-	450	450	630	560	490	790	690	870	500	42	240	240	575	130	250	406	24	30	24	4	5
250vgsp28B	Y 225M-4	840	433	590	480	430	300	669	311	1680	305	1080	-	450	450	630	560	490	790	690	870	500	42	240	240	530	130	225	356	24	30	19	4	5
250vgsp28C	Y 225S-4	815	433	590	480	430	300	669	286	1680	305	1080	-	450	450	630	560	490	790	690	870	500	42	240	240	530	130	225	356	24	30	19	4	5
250vgsp520	Y 315L1-4	1240	433	590	480	430	300	766	508	1920	305	1200	-	500	500	630	560	490	790	790	895	500	42	240	240	770	140	315	508	24	30	28	4	5
250vgsp52A	Y 315S-4	1185	433	590	480	430	300	766	406	1920	305	1200	-	500	500	630	560	490	790	790	895	500	42	240	240	770	140	315	508	24	30	28	4	5
250vgsp52B	Y 280M-4	1050	433	590	480	430	300	710	419	1780	305	1170	-	500	500	630	560	490	790	790	895	500	42	240	240	640	130	280	457	24	30	24	4	5
250vgsp52C	Y 280S-4	1000	433	590	480	430	300	710	368	1780	305	1170	-	500	500	630	560	490	790	790	895	500	42	240	240	640	130	280	457	24	30	24	4	5

Outline & Installing Dimensions of Type VGSP Pumps

With base plate

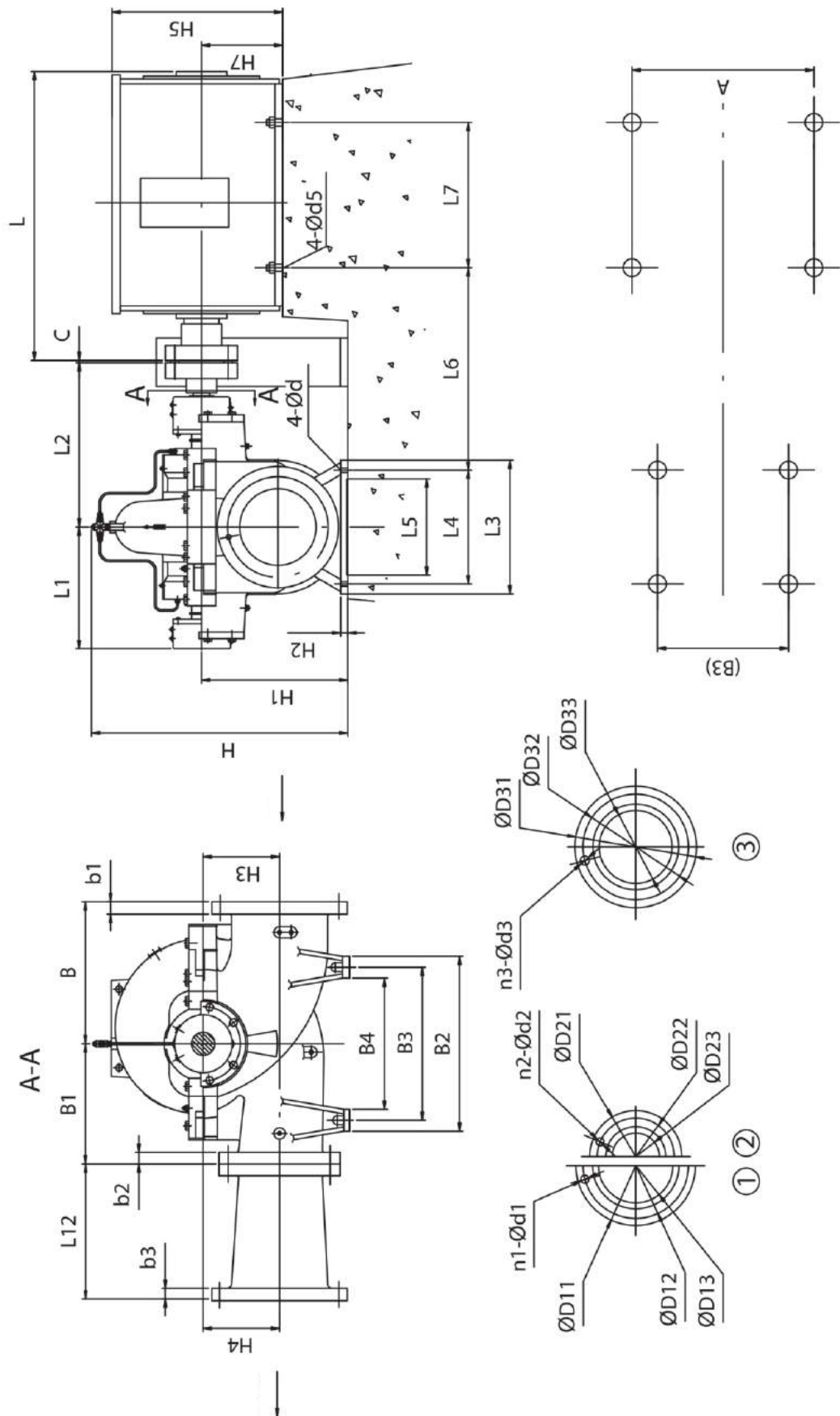
	L	L1	L2	L3	L4	L5	L6	L7	L8	L9	L10	L11	B	B1	B2	B3	B4	B5	B6	H	H1	H2	H3	H4	H5	H6	H7	A	d	d4	d5	n4	C	
250vgsp48O	Y 315M-4	1240	433	590	480	430	300	766	457	1920	305	1200	-	500	500	630	560	490	790	790	895	500	42	240	240	770	140	315	508	24	30	28	4	5
250vgsp48A	Y 280M-4	1050	433	590	480	430	300	710	419	1780	305	1170	-	500	500	630	560	490	790	790	895	500	42	240	240	640	130	280	457	24	30	24	4	5
250vgsp48B	Y 280S-4	1000	433	590	480	430	300	710	368	1780	305	1170	-	500	500	630	560	490	790	790	895	500	42	240	240	640	130	280	457	24	30	24	4	5
250vgsp48C	Y 250M-4	925	433	590	480	430	300	688	349	1680	305	1080	-	500	500	630	560	490	790	690	895	500	42	240	240	575	130	250	406	24	30	24	4	5
250vgsp1B	Y 315L2-4	1325	511	695	480	400	320	887	508	2060	295	670	670	600	500	800	700	600	980	850	1048	600	45	300	300	770	140	315	508	24	30	28	6	6
250vgsp1C	Y 315M-4	1240	511	695	480	400	320	887	457	2060	295	670	670	600	500	800	700	600	980	850	1048	600	45	300	300	770	140	315	508	24	30	28	6	6
250vgsp2A	Y 315L2-4	1325	511	695	480	400	320	887	508	2060	295	670	670	600	500	800	700	600	980	850	1048	600	45	300	300	770	140	315	508	24	30	28	6	6
250vgsp2B	Y 315L1-4	1240	511	695	480	400	320	887	508	2060	295	670	670	600	500	800	700	600	980	850	1048	600	45	300	300	770	140	315	508	24	30	28	6	6
250vgsp2C	Y 315S-4	1185	511	695	480	400	320	887	406	2060	295	670	670	600	500	800	700	600	980	850	1048	600	45	300	300	770	140	315	508	24	30	28	6	6
300vgsp39O	Y 315L1-4	1240	511	695	480	400	320	887	508	2060	295	670	670	500	500	800	700	600	980	850	1020	600	45	300	300	770	140	315	508	24	30	28	6	6
300vgsp39A	Y 315M-4	1240	511	695	480	400	320	887	457	2060	295	670	670	500	500	800	700	600	980	850	1020	600	45	300	300	770	140	315	508	24	30	28	6	6
300vgsp39B	Y 280M-4	1050	511	695	480	400	320	831	419	1900	295	620	620	500	500	800	700	600	980	770	1020	600	45	300	300	640	140	280	457	24	30	24	6	6
300vgsp39C	Y 280S-4	1000	511	695	480	400	320	831	368	1900	295	620	620	500	500	800	700	600	980	770	1020	600	45	300	300	640	140	280	457	24	30	24	6	6
300vgsp7O	Y 315M-4	1240	511	695	480	400	320	887	457	2060	295	670	670	500	500	800	700	600	980	850	1020	600	45	300	300	770	140	315	508	24	30	28	6	6
300vgsp7A	Y 315S-4	1185	511	695	480	400	320	887	406	2060	295	670	670	500	500	800	700	600	980	850	1020	600	45	300	300	770	140	315	508	24	30	28	6	6
300vgsp7B	Y 280M-4	1050	511	695	480	400	320	831	419	1900	295	620	620	500	500	800	700	600	980	770	1020	600	45	300	300	640	140	280	457	24	30	24	6	6
300vgsp7C	Y 280S-4	1000	511	695	480	400	320	831	368	1900	295	620	620	500	500	800	700	600	980	770	1020	600	45	300	300	640	140	280	457	24	30	24	6	6
300vgsp66B	Y 315L2-4	1325	566	754	612	520	440	885	508	2180	355	700	700	550	550	800	700	600	980	850	1152	670	45	300	300	770	140	315	508	24	30	28	6	5
300vgsp66C	Y 315M-4	1240	566	754	612	520	440	885	457	2180	355	700	700	550	550	800	700	600	980	850	1152	670	45	300	300	770	140	315	508	24	30	28	6	5
300vgsp54A	Y 315L2-4	1325	566	754	612	520	440	885	508	2180	355	700	700	550	550	800	700	600	980	850	1152	670	45	300	300	770	140	315	508	24	30	28	6	5
300vgsp54B	Y 315M-4	1240	566	754	612	520	440	885	457	2180	355	700	700	550	550	800	700	600	980	850	1152	670	45	300	300	770	140	315	508	24	30	28	6	5
300vgsp54C	Y 315S-4	1185	566	754	612	520	440	885	406	2180	355	700	700	550	550	800	700	600	980	850	1152	670	45	300	300	770	140	315	508	24	30	28	6	5
350vgsp24O	Y 315S-4	1185	511	695	520	400	320	887	406	2060	295	670	670	550	500	800	700	600	980	850	1050	600	45	300	300	770	140	315	508	24	30	28	6	6
350vgsp24A	Y 280S-4	1000	511	695	520	400	320	831	368	1900	295	620	620	550	500	800	700	600	980	770	1050	600	45	300	300	640	140	280	457	24	30	24	6	6
350vgsp24B	Y 280S-4	1000	511	695	520	400	320	831	368	1900	295	620	620	550	500	800	700	600	980	770	1050	600	45	300	300	640	140	280	457	24	30	24	6	6
350vgsp24C	Y 250M-4	925	511	695	520	400	320	809	349	1790	295	1184	-	550	500	800	700	600	980	720	1050	600	45	300	300	575	140	250	406	24	25	24	4	6

Outline & Installing Dimensions of Type VGSP Pumps

With base plate

	L	L1	L2	L3	L4	L5	L6	L7	L8	L9	L10	L11	B	B1	B2	B3	B4	B5	B6	H	H1	H2	H3	H4	H5	H6	H7	A	d	d4	d5	n4	C	
350vgsp23O	Y 280M-4	1050	511	695	520	400	320	831	419	1900	295	620	550	500	800	700	600	980	770	1050	600	45	300	300	640	140	280	457	24	30	24	6	6	
350vgsp23A	Y 280S-4	1000	511	695	520	400	320	831	368	1900	295	620	550	500	800	700	600	980	770	1050	600	45	300	300	640	140	280	457	24	30	24	6	6	
350vgsp23B	Y 250M-4	925	511	695	520	400	320	809	349	1790	295	1184	-	550	500	800	700	600	980	720	1050	600	45	300	300	575	140	250	406	24	25	24	4	6
350vgsp23C	Y 225M-4	840	511	695	520	400	320	790	311	1720	295	1145	-	550	500	800	700	600	980	670	1050	600	45	300	300	530	130	225	356	24	25	19	4	6
400vgsp53B	Y 315L2-4	1325	556	754	612	520	440	886	508	2180	355	700	650	550	800	700	600	980	850	1120	670	48	350	350	770	140	315	508	24	30	28	6	6	
400vgsp53C	Y 315L1-4	1240	556	754	612	520	440	886	508	2180	355	700	650	550	800	700	600	980	850	1120	670	48	350	350	770	140	315	508	24	30	28	6	6	
400vgsp51B	Y 315L2-4	1325	556	754	612	520	440	886	508	2180	355	700	650	550	800	700	600	980	850	1120	670	48	350	350	770	140	315	508	24	30	28	6	6	
400vgsp51C	Y 315L1-4	1240	556	754	612	520	440	886	508	2180	355	700	650	550	800	700	600	980	850	1120	670	48	350	350	770	140	315	508	24	30	28	6	6	
400vgsp32O	Y 315L2-4	1325	556	754	612	520	440	886	508	2180	355	700	650	550	800	700	600	980	850	1175	670	48	350	350	770	140	315	508	24	30	28	6	6	
400vgsp32A	Y 315L1-4	1240	556	754	612	520	440	886	508	2180	355	700	650	550	800	700	600	980	850	1175	670	48	350	350	770	140	315	508	24	30	28	6	6	
400vgsp32B	Y 315M-4	1240	556	754	612	520	440	886	457	2180	355	700	650	550	800	700	600	980	850	1175	670	48	350	350	770	140	315	508	24	30	28	6	6	
400vgsp32C	Y 315S-4	1185	556	754	612	520	440	886	406	2180	355	700	650	550	800	700	600	980	850	1175	670	48	350	350	770	140	315	508	24	30	28	6	6	
400vgsp31O	Y 315L1-4	1240	556	754	612	520	440	886	508	2180	355	700	650	550	800	700	600	980	850	1175	670	48	350	350	770	140	315	508	24	30	28	6	6	
400vgsp31A	Y 315M-4	1240	556	754	612	520	440	886	457	2180	355	700	650	550	800	700	600	980	850	1175	670	48	350	350	770	140	315	508	24	30	28	6	6	
400vgsp31B	Y 315S-4	1185	556	754	612	520	440	886	406	2180	355	700	650	550	800	700	600	980	850	1175	670	48	350	350	770	140	315	508	24	30	28	6	6	
400vgsp31C	Y 280M-4	1050	556	754	612	520	440	830	419	2020	355	650	650	550	800	700	600	980	770	1175	670	48	350	350	640	140	280	457	24	30	24	6	6	

Outline & installing dimensions of type VGSP pumps (without base plate)



Outline & Installing Dimensions of Type VGSP Pumps

Without base plate

	L	L1	L2	L3	L4	L5	L6	L7	B	B1	B2	B3	B4	H	H1	H2	H3	H4	H5	H7	A	d	d5	C
200vgsp1080	Y355M1-2	1540	381	515	390	340	250	743	370	370	530	450	370	714	400	36	200	200	848	355	610	24	28	4
200vgsp1050	Y355L2-4	1570	433	590	480	430	300	804	600	500	770	700	630	955	500	42	300	300	848	355	610	24	28	5
200vgsp105A	Y355M1-4	1570	433	590	480	430	300	804	600	500	770	700	630	955	500	42	300	300	848	355	610	24	28	5
200vgsp1080	Y355M1-4	1570	433	590	480	430	300	804	600	500	770	700	630	955	500	42	300	300	848	355	610	24	28	5
250vgsp910	Y355L3-4	1570	511	695	480	400	320	925	630	600	800	700	600	1048	600	45	300	300	848	355	610	24	28	6
250vgsp91A	Y355M3-4	1570	511	695	480	400	320	925	630	600	800	700	600	1048	600	45	300	300	848	355	610	24	28	6
250vgsp820	Y355M3-4	1570	511	695	480	400	320	925	630	600	800	700	600	1048	600	45	300	300	848	355	610	24	28	6
250vgsp1500	Y4006-4	1980	511	695	480	400	320	1045	1000	650	800	700	600	1155	600	32	350	350	1330	400	710	24	35	5
250vgsp150A	Y4003-4	1980	511	695	480	400	320	1045	1000	650	800	700	600	1155	600	32	350	350	1330	400	710	24	35	5
250vgsp150B	Y355L3-4	1570	511	695	480	400	320	924	630	650	800	700	600	1155	600	32	350	350	848	355	610	24	28	5
250vgsp150C	Y355L2-4	1570	511	695	480	400	320	924	630	650	800	700	600	1155	600	32	350	350	848	355	610	24	28	5
250vgsp1320	Y4003-4	1980	511	695	480	400	320	1045	1000	650	800	700	600	1155	600	32	350	350	1330	400	710	24	35	5
250vgsp132A	Y4001-4	1980	511	695	480	400	320	1045	1000	650	800	700	600	1155	600	32	350	350	1330	400	710	24	35	5
250vgsp132B	Y355L3-4	1570	511	695	480	400	320	924	630	650	800	700	600	1155	600	32	350	350	848	355	610	24	28	5
250vgsp150B	Y355M3-4	1570	511	695	480	400	320	924	630	650	800	700	600	1155	600	32	350	350	848	355	610	24	28	5
300vgsp660	Y355L2-4	1570	556	754	612	520	440	923	630	550	800	700	600	1152	670	45	300	300	848	355	610	24	28	5
300vgsp66A	Y355M3-4	1570	556	754	612	520	440	923	630	550	800	700	600	1152	670	45	300	300	848	355	610	24	28	5
300vgsp40	Y355M3-4	1570	556	754	612	520	440	923	630	550	800	700	600	1152	670	45	300	300	848	355	610	24	28	5
300vgsp1160	Y4005-4	1980	556	754	612	520	440	1045	1000	650	800	700	600	1145	670	32	350	350	1330	400	710	24	35	6
300vgsp116A	Y4003-4	1980	556	754	612	520	440	1045	1000	650	800	700	600	1145	670	32	350	350	1330	400	710	24	35	6
300vgsp116B	Y4001-4	1980	556	754	612	520	440	1045	1000	650	800	700	600	1145	670	32	350	350	1330	400	710	24	35	6
300vgsp116C	Y355M3-4	1570	556	754	612	520	440	924	630	650	800	700	600	1145	670	32	350	350	848	355	610	24	28	6
300vgsp1040	Y4003-4	1980	556	754	612	520	440	1045	1000	650	800	700	600	1145	670	32	350	350	1330	400	710	24	35	6
300vgsp104A	Y4001-4	1980	556	754	612	520	440	1045	1000	650	800	700	600	1145	670	32	350	350	1330	400	710	24	35	6
300vgsp104B	Y355M3-4	1570	556	754	612	520	440	924	630	650	800	700	600	1145	670	32	350	350	848	355	610	24	28	6
300vgsp104C	Y315L2-4	1325	556	754	612	520	440	886	508	650	800	700	600	1145	670	32	350	350	770	315	508	24	28	6
400vgsp530	Y355L3-4	1570	556	754	612	520	440	924	630	650	800	700	600	1120	670	48	350	350	848	355	610	24	28	6
400vgsp53A	Y355M3-4	1570	556	754	612	520	440	924	630	650	800	700	600	1120	670	48	350	350	848	355	610	24	28	6
400vgsp510	Y355L3-4	1570	556	754	612	520	440	924	630	650	800	700	600	1120	670	48	350	350	848	355	610	24	28	6
400vgsp510	Y355M3-4	1570	556	754	612	520	440	924	630	650	800	700	600	1120	670	48	350	350	848	355	610	24	28	6
400vgsp940	Y4501-4	2180	622	860	610	520	450	1172	1120	700	650	1050	950	1285	750	50	350	350	1475	450	800	24	35	7
400vgsp94A	Y4004-4	1980	622	860	610	520	450	1152	1000	700	650	1050	950	1285	750	50	350	350	1330	400	710	24	35	7

Outline & Installing Dimensions of Type VGSP Pumps

Without base plate

	L	L1	L2	L3	L4	L5	L6	L7	B	B1	B2	B3	B4	H	H1	H2	H3	H4	H5	H7	A	d	d5	C
400vgsp94B	1980	622	860	610	520	450	1152	1000	700	650	1050	950	850	1285	750	50	350	350	1330	400	710	24	35	7
400vgsp94C	1570	622	860	610	520	450	1031	630	700	650	1050	950	850	1285	750	50	350	350	848	355	610	24	28	7
400vgsp800	1980	622	860	610	520	450	1152	1000	700	650	1050	950	850	1285	750	50	350	350	1330	400	710	24	35	7
400vgsp1080	1980	622	860	610	520	450	1152	1000	700	650	1050	950	850	1285	750	50	350	350	1330	400	710	24	35	7
400vgsp80B	1570	622	860	610	520	450	1031	630	700	650	1050	950	850	1285	750	50	350	350	848	355	610	24	28	7
400vgsp80C	1570	622	860	610	520	450	1031	560	700	650	1050	950	850	1285	750	50	350	350	848	355	610	24	28	7
400vgsp1600	2550	622	860	720	520	420	1332	1250	750	650	1050	950	850	1290	750	40	400	400	1655	500	900	24	42	7
400vgsp160A	2550	622	860	720	520	420	1332	1250	750	650	1050	950	850	1290	750	40	400	400	1655	500	900	24	42	7
400vgsp160B	2180	622	860	720	520	420	1172	1120	750	650	1050	950	850	1290	750	40	400	400	1475	450	800	24	35	7
400vgsp160C	1980	622	860	720	520	420	1152	1000	750	650	1050	950	850	1290	750	40	400	400	1330	400	710	24	35	7
400vgsp1390	2550	622	860	720	520	420	1332	1250	750	650	1050	950	850	1290	750	40	400	400	1655	500	900	24	42	7
400vgsp139A	2180	622	860	720	520	420	1172	1120	750	650	1050	950	850	1290	750	40	400	400	1475	450	800	24	35	7
400vgsp139B	2180	622	860	720	520	420	1172	1120	750	650	1050	950	850	1290	750	40	400	400	1475	450	800	24	35	7
400vgsp139C	1980	622	860	720	520	420	1152	1000	750	650	1050	950	850	1290	750	40	400	400	1330	400	710	24	35	7
400vgsp430	1980	622	860	612	520	450	1152	1000	750	650	1050	950	850	1295	750	55	400	400	1330	400	710	24	35	7
450vgsp43A	1980	622	860	612	520	450	1152	1000	750	650	1050	950	850	1295	750	55	400	400	1330	400	710	24	35	7
450vgsp43B	1570	622	860	612	520	450	1031	630	750	650	1050	950	850	1295	750	55	400	400	848	355	610	24	28	7
450vgsp43C	1570	622	860	612	520	450	1031	560	750	650	1050	950	850	1295	750	55	400	400	848	355	610	24	28	7
450vgsp420	1980	622	860	612	520	450	1152	1000	750	650	1050	950	850	1295	750	55	400	400	1330	400	710	24	35	7
450vgsp42A	1570	622	860	612	520	450	1031	630	750	650	1050	950	850	1295	750	55	400	400	848	355	610	24	28	7
450vgsp42B	1570	622	860	612	520	450	1031	560	750	650	1050	950	850	1295	750	55	400	400	848	355	610	24	28	7
450vgsp42C	1325	622	860	612	520	450	993	508	750	650	1050	950	850	1295	750	55	400	400	770	315	508	24	28	7
450vgsp700	2180	622	860	720	520	420	1172	1120	700	650	1050	950	850	1290	750	50	400	400	1475	450	800	24	35	7
400vgsp70A	1980	622	860	720	520	420	1152	1000	700	650	1050	950	850	1290	750	50	400	400	1330	400	710	24	35	7
400vgsp70B	1980	622	860	720	520	420	1152	1000	700	650	1050	950	850	1290	750	50	400	400	1330	400	710	24	35	7
400vgsp70C	1570	622	860	720	520	420	1031	630	700	650	1050	950	850	1290	750	50	400	400	848	355	610	24	28	7
400vgsp670	1980	622	860	720	520	420	1152	1000	700	650	1050	950	850	1290	750	50	400	400	1330	400	710	24	35	7
400vgsp67A	1980	622	860	720	520	420	1152	1000	700	650	1050	950	850	1290	750	50	400	400	1330	400	710	24	35	7
400vgsp67B	1980	622	860	720	520	420	1152	1000	700	650	1050	950	850	1290	750	50	400	400	1330	400	710	24	35	7
400vgsp67C	1570	622	860	720	520	420	1031	630	700	650	1050	950	850	1290	750	50	400	400	848	355	610	24	28	7
400vgsp750	2180	622	860	720	580	420	1172	1120	720	630	1020	800	580	1300	800	55	415	415	1475	450	800	41	35	7
400vgsp975A	2180	622	860	720	580	420	1172	1120	720	630	1020	800	580	1300	800	55	415	415	1475	450	800	41	35	7
500vgsp75B	2180	622	860	720	580	420	1172	1120	720	630	1020	800	580	1300	800	55	415	415	1475	450	800	41	35	7
500vgsp75C	1980	622	860	720	580	420	1152	1000	720	630	1020	800	580	1300	800	55	415	415	1330	400	710	41	35	7

Suction & Discharge Nozzle Flange Discharge Conic Pipe Dimensions of Tpye VGSP Pumps

	b1	D11	D12	D13	n1	d1	b2	D21	D22	D23	n2	d2	b3	DB1	DB2	DB3	n3	d3	L12
125\gsp55	26	250	210	125	8	17.5	22	200	160	80	8	17.5	26	270	210	125	8	17.5	300
125\gsp51	26	250	210	125	8	17.5	22	200	160	80	8	17.5	26	270	210	125	8	17.5	300
125\gsp90	26	250	210	125	8	17.5	22	200	160	80	8	17.5	26	270	210	125	8	17.5	300
125\gsp82	26	250	210	125	8	17.5	22	200	160	80	8	17.5	26	270	210	125	8	17.5	300
150\gsp75	26	285	240	150	8	22	24	220	180	100	8	17.5	26	300	240	150	8	22	300
150\gsp68	26	285	240	150	8	22	24	220	180	100	8	17.5	26	300	240	150	8	22	300
150\gsp123	26	285	240	150	8	22	24	220	180	100	8	17.5	26	300	240	150	8	22	300
150\gsp119	26	285	240	150	8	22	24	220	180	100	8	17.5	26	300	240	150	8	22	300
200\gsp59	30	340	295	200	12	22	26	250	210	125	8	17.5	30	360	295	200	12	22	350
200\gsp61	30	340	295	200	12	22	26	250	210	125	8	17.5	30	360	295	200	12	22	350
200\gsp108	30	340	295	200	12	22	26	250	210	125	8	17.5	30	360	295	200	12	22	350
200\gsp100	30	340	295	200	12	22	26	250	210	125	8	17.5	30	360	295	200	12	22	350
125\gsp14	26	250	210	125	8	17.5	22	200	160	80	8	17.5	26	270	210	125	8	17.5	300
125\gsp13	26	250	210	125	8	17.5	22	200	160	80	8	17.5	26	270	210	125	8	17.5	300
125\gsp22	26	250	210	125	8	17.5	22	200	160	80	8	17.5	26	270	210	125	8	17.5	300
125\gsp21	26	250	210	125	8	17.5	22	200	160	80	8	17.5	26	270	210	125	8	17.5	300
125\gsp39	26	250	210	125	8	17.5	22	200	160	80	8	17.5	26	270	210	125	8	17.5	300
125\gsp35	26	250	210	125	8	17.5	22	200	160	80	8	17.5	26	270	210	125	8	17.5	300
150\gsp19	26	285	240	150	8	22	24	220	180	100	8	17.5	26	300	240	150	8	22	300
150\gsp17	26	285	240	150	8	22	24	220	180	100	8	17.5	26	300	240	150	8	22	300
150\gsp31	26	285	240	150	8	22	24	220	180	100	8	17.5	26	300	240	150	8	22	300
150\gsp29	26	285	240	150	8	22	24	220	180	100	8	17.5	26	300	240	150	8	22	300
150\gsp52	26	285	240	150	8	22	24	220	180	100	8	17.5	26	300	240	150	8	22	300

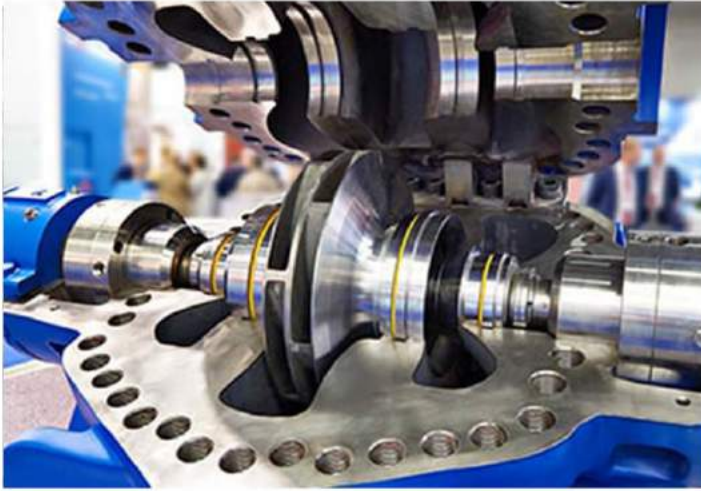
Suction & Discharge Nozzle Flange Discharge Conic Pipe Dimensions of Tpye VGSP Pumps

	b1	D11	D12	D13	n1	d1	b2	D21	D22	D23	n2	d2	b3	D31	D32	D33	n3	d3	L12
150vgsp51	26	285	240	150	8	22	24	220	180	100	8	17.5	26	300	240	150	8	22	300
200vgsp14	30	340	295	200	12	22	26	250	210	125	8	17.5	30	360	295	200	12	22	350
200vgsp15	30	340	295	200	12	22	26	250	210	125	8	17.5	30	360	295	200	12	22	350
200vgsp27	30	340	295	200	12	22	26	250	210	125	8	17.5	30	360	295	200	12	22	350
200vgsp25	30	340	295	200	12	22	26	250	210	125	8	17.5	30	360	295	200	12	22	350
200vgsp47	30	340	295	200	12	22	26	250	210	125	8	17.5	30	360	295	200	12	22	350
200vgsp43	30	340	295	200	12	22	26	250	210	125	8	17.5	30	360	295	200	12	22	350
200vgsp76	30	340	295	200	12	22	26	250	210	125	8	17.5	30	360	295	200	12	22	350
200vgsp69	30	340	295	200	12	22	26	250	210	125	8	17.5	30	360	295	200	12	22	350
200vgsp21	30	340	295	200	12	22	26	285	240	150	8	22	34	360	295	200	12	22	300
200vgsp20	30	340	295	200	12	22	26	285	240	150	8	22	34	360	295	200	12	22	300
200vgsp38	30	340	295	200	12	22	26	285	240	150	8	22	34	360	295	200	12	22	300
200vgsp35	30	340	295	200	12	22	26	285	240	150	8	22	34	360	295	200	12	22	300
200vgsp66	30	340	295	200	12	22	26	285	240	150	8	22	34	360	295	200	12	22	300
200vgsp60	30	340	295	200	12	22	26	285	240	150	8	22	34	360	295	200	12	22	300
200vgsp105	30	365	310	200	12	26	26	300	250	150	8	26	34	360	295	200	12	22	300
200vgsp90	30	365	310	200	12	26	26	300	250	150	8	26	34	360	295	200	12	22	300
250vgsp30	32	405	355	250	12	26	30	340	295	200	12	22	36	425	355	250	12	26	300
250vgsp28	32	405	355	250	12	26	30	340	295	200	12	22	36	425	355	250	12	26	300
250vgsp52	32	405	355	250	12	26	30	340	295	200	12	22	36	425	355	250	12	26	300
250vgsp48	32	405	355	250	12	26	30	340	295	200	12	22	36	425	355	250	12	26	300
250vgsp91	32	405	355	250	12	26	30	340	295	200	12	22	36	425	355	250	12	26	300
250vgsp82	32	405	355	250	12	26	30	340	295	200	12	22	36	425	355	250	12	26	300

Suction & Discharge Nozzle Flange Discharge Conic Pipe Dimensions of Tpye VGSP Pumps

	b1	D11	D12	D13	n1	d1	b2	D21	D22	D23	n2	d2	b3	D31	D32	D33	n3	d3	L12
250vgsp150	47	425	370	250	12	30	41	360	310	200	12	26	36	425	355	250	12	26	300
250vgsp132	47	425	370	250	12	30	41	360	310	200	12	26	36	425	355	250	12	26	300
300vgsp39	32	460	410	300	12	26	32	405	355	250	12	26	34	485	410	300	12	26	300
300vgsp37	32	460	410	300	12	26	32	405	355	250	12	26	34	485	410	300	12	26	300
300vgsp66	32	460	410	300	12	26	32	405	355	250	12	26	34	485	410	300	12	26	300
300vgsp54	32	460	410	300	12	26	32	405	355	250	12	26	34	485	410	300	12	26	300
300vgsp116	51	485	430	300	16	30	48	425	370	250	12	30	34	485	410	300	12	26	300
300vgsp104	51	485	430	300	16	30	48	425	370	250	12	30	34	485	410	300	12	26	300
350vgsp24	36	520	470	350	16	26	32	460	410	300	12	26	38	555	470	350	16	26	300
350vgsp23	36	520	470	350	16	26	32	460	410	300	12	26	38	555	470	350	16	26	300
400vgsp53	38	580	525	400	16	30	32	460	410	300	12	26	48	620	525	400	16	30	450
400vgsp51	38	580	525	400	16	30	32	460	410	300	12	26	48	620	525	400	16	30	450
400vgsp94	38	580	525	400	16	30	32	460	410	300	12	26	48	620	525	400	16	30	450
400vgsp80	38	580	525	400	16	30	32	460	410	300	12	26	48	620	525	400	16	30	450
400vgsp160	58	620	550	400	16	36	50	485	430	300	16	30	48	620	525	400	16	30	450
400vgsp139	58	620	550	400	16	36	50	485	430	300	16	30	48	620	525	400	16	30	450
400vgsp32	38	580	525	400	16	30	36	520	470	350	16	26	40	620	525	400	16	30	300
400vgsp31	38	580	525	400	16	30	36	520	470	350	16	26	40	620	525	400	16	30	300
450vgsp43	38	640	585	450	20	31	38	580	525	400	16	31	42	670	585	450	20	30	450
450vgsp42	38	640	585	450	20	31	38	580	525	400	16	31	42	670	585	450	20	30	450
400vgsp70	38	580	525	400	16	30	36	520	470	350	16	26	40	620	525	400	16	30	300
400vgsp67	38	580	525	400	16	30	36	520	470	350	16	26	40	620	525	400	16	30	300
450vgsp75	42	715	650	500	20	34	36	520	470	350	16	28	40	620	525	400	16	30	300

VGSP-VGSPL SERIES SINGLE-STAGE SUCTION PUMPS







VINCENZI & GIBERTINI S.r.l. - Via A. Labriola n° 25 - 41123 MODENA (Italy)
Tel. +39 059 33.53.03 - +39 059 33.53.81 - Telefax +39 059 82.67.67
E-mail: info@vincenzipumps.com - www.vincenzipumps.com



Made In Italy



VGSP SERIES
Technical Catalogue

2021